

Note :-

- BUILDING WILL BE DESIGNED (STRUCTURES) AS PER RELEVANT IS CODES FOR EARTH QUAKE RESISTANCE.
- THE BUILDING IS ARTIFICIALLY LIT AND MECHANICALLY VENTILATED.

LEGEND:-

PROJECT :

REVISED BUILDING PLANS OF GROUP HOUSING COLONY AREA MEASURING 25.087 ACRES (LICENSE NO. 123 OF 2012 DATED 20-12-2012 IN SECTOR-63, GURGAON BEING DEVELOPED BY ARJIE BUILDERS & DEVELOPERS PVT. LTD. AND OTHERS IN COLLABORATION WITH DLF HOME DEVELOPERS LTD. EARLIER KNOWN AS DLF NEW GURGAON HOME DEVELOPERS PVT.LTD)

ARCHITECTURE:
ARCOP

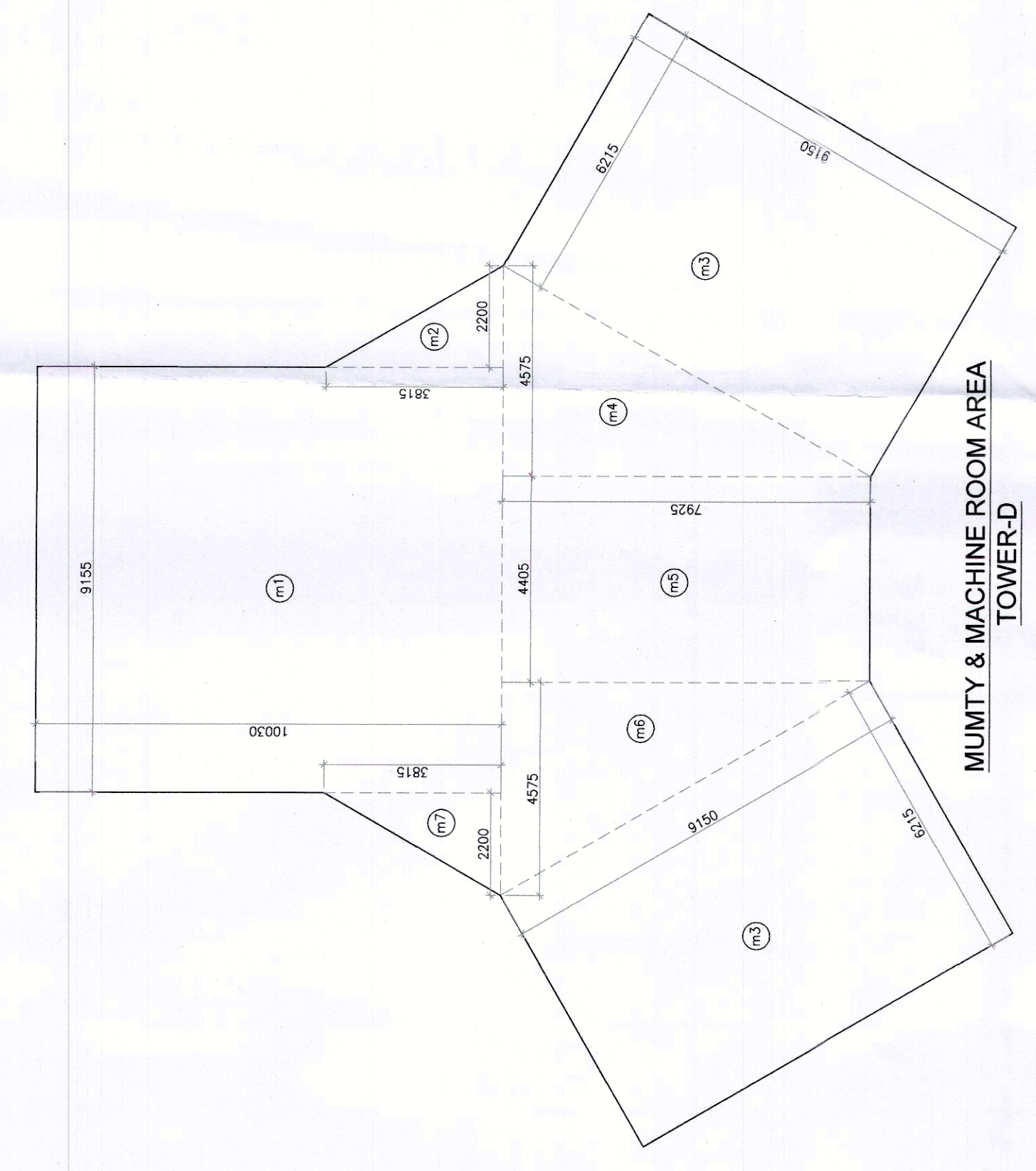
ARCOP ASSOCIATES PVT LTD
Plot No. 36B, Sector-32, Institutional Area, Gurugram, Haryana, 122001, India
Tel.: 91-124-4595500
91-124-4595550
Fax: 91-124-4595550

TO BE READ WITH THIS OFFICE MEMO NO. 021 T DATED: 30-05-2023

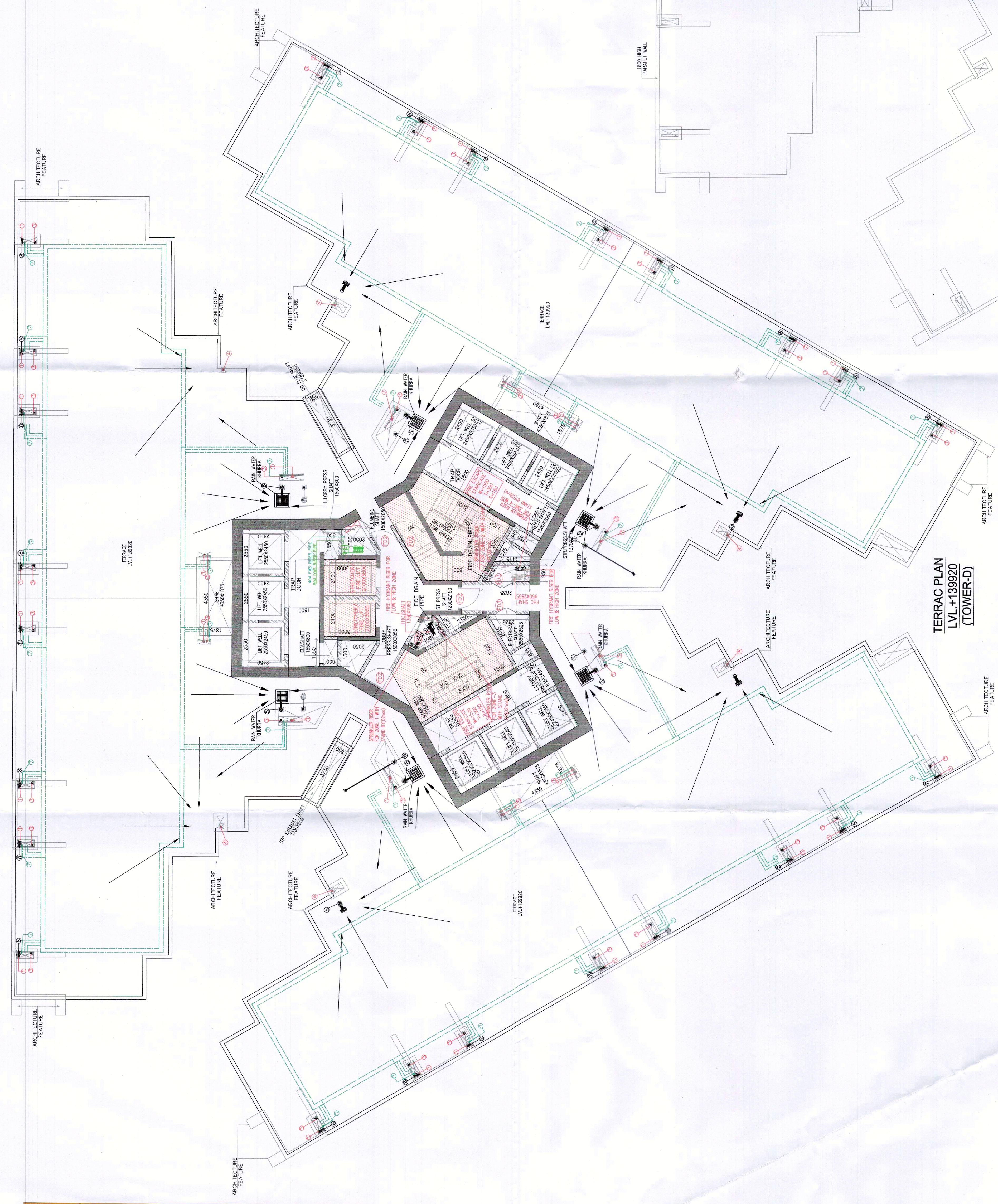
Building plans have been checked and found in order as per Public Health Services point of view.

OWNER'S SEAL & SIGNATURE
ARCHITECT'S SEAL & SIGNATURE
DHF Home Developers Limited
FRANKEEK BHATTARJIA
APRIL 2023
Registration No. CA02023007

JAN - 2023 Scale : 1:100
Drawing Title :-
TERRACE & MACHINE ROOM-1 PLAN
TOWER-D
Drawing No.:-
TD-05



GROSS-A		AREA OF MUMTY & MACHINE ROOM AREA (TOWER-D)	
NO.	AREA	NO.	AREA
1	3.100	1	10.000
2	3.100	2	11.250
3	3.100	3	11.750
4	3.100	4	11.750
5	3.100	5	11.750
6	3.100	6	11.750
7	3.100	7	11.750
8	3.100	8	11.750
9	3.100	9	11.750
10	3.100	10	11.750
11	3.100	11	11.750
12	3.100	12	11.750
13	3.100	13	11.750
14	3.100	14	11.750
15	3.100	15	11.750
16	3.100	16	11.750
17	3.100	17	11.750
18	3.100	18	11.750
19	3.100	19	11.750
20	3.100	20	11.750
21	3.100	21	11.750
22	3.100	22	11.750
23	3.100	23	11.750
24	3.100	24	11.750
25	3.100	25	11.750
26	3.100	26	11.750
27	3.100	27	11.750
28	3.100	28	11.750
29	3.100	29	11.750
30	3.100	30	11.750
31	3.100	31	11.750
32	3.100	32	11.750
33	3.100	33	11.750
34	3.100	34	11.750
35	3.100	35	11.750
36	3.100	36	11.750
37	3.100	37	11.750
38	3.100	38	11.750
39	3.100	39	11.750
40	3.100	40	11.750
41	3.100	41	11.750
42	3.100	42	11.750
43	3.100	43	11.750
44	3.100	44	11.750
45	3.100	45	11.750
46	3.100	46	11.750
47	3.100	47	11.750
48	3.100	48	11.750
49	3.100	49	11.750
50	3.100	50	11.750
51	3.100	51	11.750
52	3.100	52	11.750
53	3.100	53	11.750
54	3.100	54	11.750
55	3.100	55	11.750
56	3.100	56	11.750
57	3.100	57	11.750
58	3.100	58	11.750
59	3.100	59	11.750
60	3.100	60	11.750
61	3.100	61	11.750
62	3.100	62	11.750
63	3.100	63	11.750
64	3.100	64	11.750
65	3.100	65	11.750
66	3.100	66	11.750
67	3.100	67	11.750
68	3.100	68	11.750
69	3.100	69	11.750
70	3.100	70	11.750
71	3.100	71	11.750
72	3.100	72	11.750
73	3.100	73	11.750
74	3.100	74	11.750
75	3.100	75	11.750
76	3.100	76	11.750
77	3.100	77	11.750
78	3.100	78	11.750
79	3.100	79	11.750
80	3.100	80	11.750
81	3.100	81	11.750
82	3.100	82	11.750
83	3.100	83	11.750
84	3.100	84	11.750
85	3.100	85	11.750
86	3.100	86	11.750
87	3.100	87	11.750
88	3.100	88	11.750
89	3.100	89	11.750
90	3.100	90	11.750
91	3.100	91	11.750
92	3.100	92	11.750
93	3.100	93	11.750
94	3.100	94	11.750
95	3.100	95	11.750
96	3.100	96	11.750
97	3.100	97	11.750
98	3.100	98	11.750
99	3.100	99	11.750
100	3.100	100	11.750
TOTAL AREA OF MUMTY & MACHINE ROOM AREA	305.125	TOTAL AREA OF MUMTY & MACHINE ROOM AREA	305.125



LEGEND :-

1	1000 APC COIL UNIT PIPE
2	1000 APC CONDENSATE DRAIN PIPE
3	1000 APC CONDENSATE DRAIN PIPE
4	1000 APC CONDENSATE DRAIN PIPE
5	1000 APC CONDENSATE DRAIN PIPE
6	1000 APC CONDENSATE DRAIN PIPE
7	1000 APC CONDENSATE DRAIN PIPE
8	1000 APC CONDENSATE DRAIN PIPE
9	1000 APC CONDENSATE DRAIN PIPE
10	1000 APC CONDENSATE DRAIN PIPE
11	1000 APC CONDENSATE DRAIN PIPE
12	1000 APC CONDENSATE DRAIN PIPE
13	1000 APC CONDENSATE DRAIN PIPE
14	1000 APC CONDENSATE DRAIN PIPE
15	1000 APC CONDENSATE DRAIN PIPE
16	1000 APC CONDENSATE DRAIN PIPE
17	1000 APC CONDENSATE DRAIN PIPE
18	1000 APC CONDENSATE DRAIN PIPE
19	1000 APC CONDENSATE DRAIN PIPE
20	1000 APC CONDENSATE DRAIN PIPE
21	1000 APC CONDENSATE DRAIN PIPE
22	1000 APC CONDENSATE DRAIN PIPE
23	1000 APC CONDENSATE DRAIN PIPE
24	1000 APC CONDENSATE DRAIN PIPE
25	1000 APC CONDENSATE DRAIN PIPE
26	1000 APC CONDENSATE DRAIN PIPE
27	1000 APC CONDENSATE DRAIN PIPE
28	1000 APC CONDENSATE DRAIN PIPE
29	1000 APC CONDENSATE DRAIN PIPE
30	1000 APC CONDENSATE DRAIN PIPE
31	1000 APC CONDENSATE DRAIN PIPE
32	1000 APC CONDENSATE DRAIN PIPE
33	1000 APC CONDENSATE DRAIN PIPE
34	1000 APC CONDENSATE DRAIN PIPE
35	1000 APC CONDENSATE DRAIN PIPE
36	1000 APC CONDENSATE DRAIN PIPE
37	1000 APC CONDENSATE DRAIN PIPE
38	1000 APC CONDENSATE DRAIN PIPE
39	1000 APC CONDENSATE DRAIN PIPE
40	1000 APC CONDENSATE DRAIN PIPE
41	1000 APC CONDENSATE DRAIN PIPE
42	1000 APC CONDENSATE DRAIN PIPE
43	1000 APC CONDENSATE DRAIN PIPE
44	1000 APC CONDENSATE DRAIN PIPE
45	1000 APC CONDENSATE DRAIN PIPE
46	1000 APC CONDENSATE DRAIN PIPE
47	1000 APC CONDENSATE DRAIN PIPE
48	1000 APC CONDENSATE DRAIN PIPE
49	1000 APC CONDENSATE DRAIN PIPE
50	1000 APC CONDENSATE DRAIN PIPE
51	1000 APC CONDENSATE DRAIN PIPE
52	1000 APC CONDENSATE DRAIN PIPE
53	1000 APC CONDENSATE DRAIN PIPE
54	1000 APC CONDENSATE DRAIN PIPE
55	1000 APC CONDENSATE DRAIN PIPE
56	1000 APC CONDENSATE DRAIN PIPE
57	1000 APC CONDENSATE DRAIN PIPE
58	1000 APC CONDENSATE DRAIN PIPE
59	1000 APC CONDENSATE DRAIN PIPE
60	1000 APC CONDENSATE DRAIN PIPE
61	1000 APC CONDENSATE DRAIN PIPE
62	1000 APC CONDENSATE DRAIN PIPE
63	1000 APC CONDENSATE DRAIN PIPE
64	1000 APC CONDENSATE DRAIN PIPE
65	1000 APC CONDENSATE DRAIN PIPE
66	1000 APC CONDENSATE DRAIN PIPE
67	1000 APC CONDENSATE DRAIN PIPE
68	1000 APC CONDENSATE DRAIN PIPE
69	1000 APC CONDENSATE DRAIN PIPE
70	1000 APC CONDENSATE DRAIN PIPE
71	1000 APC CONDENSATE DRAIN PIPE
72	1000 APC CONDENSATE DRAIN PIPE
73	1000 APC CONDENSATE DRAIN PIPE
74	1000 APC CONDENSATE DRAIN PIPE
75	1000 APC CONDENSATE DRAIN PIPE
76	1000 APC CONDENSATE DRAIN PIPE
77	1000 APC CONDENSATE DRAIN PIPE
78	1000 APC CONDENSATE DRAIN PIPE
79	1000 APC CONDENSATE DRAIN PIPE
80	1000 APC CONDENSATE DRAIN PIPE
81	1000 APC CONDENSATE DRAIN PIPE
82	1000 APC CONDENSATE DRAIN PIPE
83	1000 APC CONDENSATE DRAIN PIPE
84	1000 APC CONDENSATE DRAIN PIPE
85	1000 APC CONDENSATE DRAIN PIPE
86	1000 APC CONDENSATE DRAIN PIPE
87	1000 APC CONDENSATE DRAIN PIPE
88	1000 APC CONDENSATE DRAIN PIPE
89	1000 APC CONDENSATE DRAIN PIPE
90	1000 APC CONDENSATE DRAIN PIPE
91	1000 APC CONDENSATE DRAIN PIPE
92	1000 APC CONDENSATE DRAIN PIPE
93	1000 APC CONDENSATE DRAIN PIPE
94	1000 APC CONDENSATE DRAIN PIPE
95	1000 APC CONDENSATE DRAIN PIPE
96	1000 APC CONDENSATE DRAIN PIPE
97	1000 APC CONDENSATE DRAIN PIPE
98	1000 APC CONDENSATE DRAIN PIPE
99	1000 APC CONDENSATE DRAIN PIPE
100	1000 APC CONDENSATE DRAIN PIPE

SCHEDULE OF OPENINGS ON FLOOR

S.No	Type	WIDTH	HEIGHT	SILL HT	FIRE RATING	MATERIAL	LOCATION
1.	FD2	1250	2400	-	2 HRS	AS SPECIFIED	FIRE TOWER
2.	FD3	1200	2400	-	2 HRS	AS SPECIFIED	FIRE TOWER
3.	GL	1200	2400	-	-	-	-
4.	GL1	1500	2400	-	-	-	-

PIPE SLEEVE LEGEND :-
 1. 1000 APC COIL & WATER PIPE AT DOWN ROOF
 2. 1000 APC CONDENSATE DRAIN PIPE AT DOWN ROOF