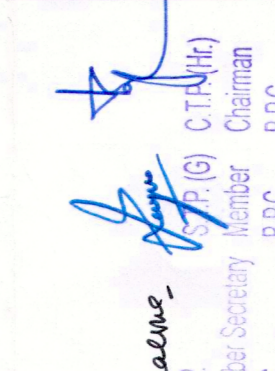

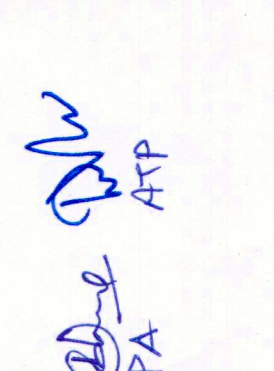


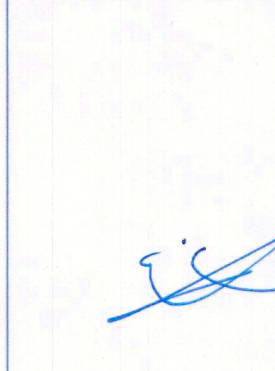
**NOTE:-**

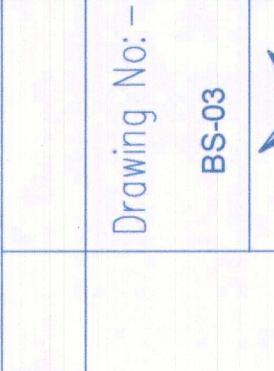
1. BUILDING HAS AUTOMATIC SPRINKLER SYSTEM.
2. BUILDING WILL BE DESIGNED (STRUCTURES) AS PER RELEVANT IS CODES FOR EARTH QUAKE RESISTANCE.
3. BUILDING IS ARTIFICIALLY LIGHTED MECHANICALLY VENTILATED & AIR-CONDITIONED WITH 100% POWER BACKUP.

**PROJECT:**  
**PROPOSED BUILDING PLAN OF (SUMMIT PLAZA) COMMERCIAL SITE UNDER TRANSIT ORIENTED DEVELOPMENT (TOD) POLICY DATED 09.02.2016 ON THE AREA MEASURING 2.65 ACRES FALLING IN RESIDENTIAL CUM-GROUP HOUSING COLONY NAMED DLF-5 (FORMERLY KNOWN AS DLF CITY PHASE-V), GURUGRAM BEING DEVELOPED BY DLF LIMITED.**

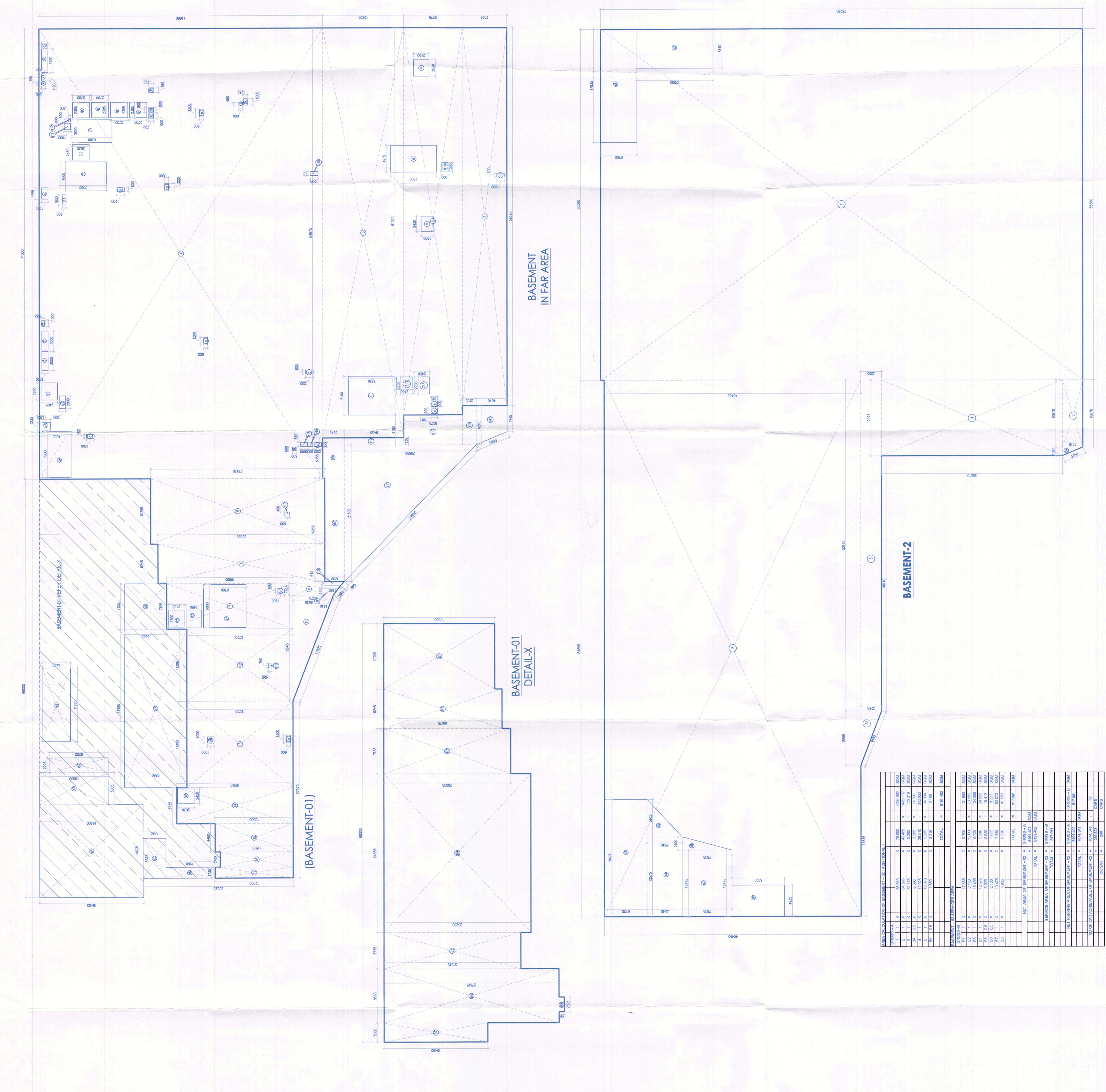
**ASSOCIATE ARCHITECTS**  
**RISIMIS ARCHITECTS**  
 RMS ARCHITECTS PVT. LTD.  
 69, Nara Niwas, Bhawani Kunj  
 (Behind D2), Vasant Kunj,  
 New Delhi-110070.  
 Tel.: 011-26888616, 26888617  
 www.rsimis-arch.com

**ARCHITECT'S SEAL & SIGNATURE**  


**OWNER'S SEAL & SIGNATURE**  


13 APRIL - 2021 Scale - 1:200  
 Drawing Title - BASEMENT-01 & 02 AREA CALCULATION  
 Drawing No. - BS-03



GROSS AREA							
1	X	58.950	X	7.015	=	418.920	SCM
2	X	64.675	X	12.625	=	829.150	SCM
3	X	71.000	X	44.650	=	3170.850	SCM
4	X	77.000	X	27.500	=	2117.500	SCM
5	X	83.000	X	18.835	=	1562.777	SCM
6	X	89.000	X	10.650	=	945.850	SCM
7	X	95.000	X	8.570	=	810.144	SCM
8	X	101.000	X	15.720	=	1587.377	SCM
9	X	107.000	X	5.785	=	619.008	SCM
10	X	113.000	X	12.305	=	1391.895	SCM
11	X	119.000	X	12.300	=	1463.700	SCM
12	X	125.000	X		=		SCM
13	X	131.000	X		=		SCM
14	X	137.000	X		=		SCM
15	X	143.000	X		=		SCM
16	X	149.000	X		=		SCM
17	X	155.000	X		=		SCM
18	X	161.000	X		=		SCM
19	X	167.000	X		=		SCM
20	X	173.000	X		=		SCM
21	X	179.000	X		=		SCM
22	X	185.000	X		=		SCM
23	X	191.000	X		=		SCM
24	X	197.000	X		=		SCM
25	X	203.000	X		=		SCM
26	X	209.000	X		=		SCM
27	X	215.000	X		=		SCM
28	X	221.000	X		=		SCM
29	X	227.000	X		=		SCM
30	X	233.000	X		=		SCM
31	X	239.000	X		=		SCM
32	X	245.000	X		=		SCM
33	X	251.000	X		=		SCM
34	X	257.000	X		=		SCM
35	X	263.000	X		=		SCM
36	X	269.000	X		=		SCM
37	X	275.000	X		=		SCM
38	X	281.000	X		=		SCM
39	X	287.000	X		=		SCM
40	X	293.000	X		=		SCM
41	X	299.000	X		=		SCM
42	X	305.000	X		=		SCM
43	X	311.000	X		=		SCM
44	X	317.000	X		=		SCM
45	X	323.000	X		=		SCM
46	X	329.000	X		=		SCM
47	X	335.000	X		=		SCM
48	X	341.000	X		=		SCM
49	X	347.000	X		=		SCM
50	X	353.000	X		=		SCM
51	X	359.000	X		=		SCM
52	X	365.000	X		=		SCM
53	X	371.000	X		=		SCM
54	X	377.000	X		=		SCM
55	X	383.000	X		=		SCM
56	X	389.000	X		=		SCM
57	X	395.000	X		=		SCM
58	X	401.000	X		=		SCM
59	X	407.000	X		=		SCM
60	X	413.000	X		=		SCM
61	X	419.000	X		=		SCM
62	X	425.000	X		=		SCM
63	X	431.000	X		=		SCM
64	X	437.000	X		=		SCM
65	X	443.000	X		=		SCM
66	X	449.000	X		=		SCM
67	X	455.000	X		=		SCM
68	X	461.000	X		=		SCM
69	X	467.000	X		=		SCM
70	X	473.000	X		=		SCM
71	X	479.000	X		=		SCM
72	X	485.000	X		=		SCM
73	X	491.000	X		=		SCM
74	X	497.000	X		=		SCM
75	X	503.000	X		=		SCM
76	X	509.000	X		=		SCM
77	X	515.000	X		=		SCM
78	X	521.000	X		=		SCM
79	X	527.000	X		=		SCM
80	X	533.000	X		=		SCM
81	X	539.000	X		=		SCM
82	X	545.000	X		=		SCM
83	X	551.000	X		=		SCM
84	X	557.000	X		=		SCM
85	X	563.000	X		=		SCM
86	X	569.000	X		=		SCM
87	X	575.000	X		=		SCM
88	X	581.000	X		=		SCM
89	X	587.000	X		=		SCM
90	X	593.000	X		=		SCM
91	X	599.000	X		=		SCM
92	X	605.000	X		=		SCM
93	X	611.000	X		=		SCM
94	X	617.000	X		=		SCM
95	X	623.000	X		=		SCM
96	X	629.000	X		=		SCM
97	X	635.000	X		=		SCM
98	X	641.000	X		=		SCM
99	X	647.000	X		=		SCM
100	X	653.000	X		=		SCM
101	X	659.000	X		=		SCM
102	X	665.000	X		=		SCM
103	X	671.000	X		=		SCM
104	X	677.000	X		=		SCM
105	X	683.000	X		=		SCM
106	X	689.000	X		=		SCM
107	X	695.000	X		=		SCM
108	X	701.000	X		=		SCM
109	X	707.000	X		=		SCM
110	X	713.000	X		=		SCM
111	X	719.000	X		=		SCM
112	X	725.000	X		=		SCM
113	X	731.000	X		=		SCM
114	X	737.000	X		=		SCM
115	X	743.000	X		=		SCM
116	X	749.000	X		=		SCM
117	X	755.000	X		=		SCM
118	X	761.000	X		=		SCM
119	X	767.000	X		=		SCM
120	X	773.000	X		=		SCM
121	X	779.000	X		=		SCM
122	X	785.000	X		=		SCM
123	X	791.000	X		=		SCM
124	X	797.000	X		=		SCM
125	X	803.000	X		=		SCM
126	X	809.000	X		=		SCM
127	X	815.000	X		=		SCM
128	X	821.000	X		=		SCM
129	X	827.000	X		=		SCM
130	X	833.000	X		=		SCM
131	X	839.000	X		=		SCM
132	X	845.000	X		=		SCM
133	X	851.000	X		=		SCM
134	X	857.000	X		=		SCM
135	X	863.000	X		=		SCM
136	X	869.000	X		=		SCM
137	X	875.000	X		=		SCM
138	X	881.000	X		=		SCM
139	X	887.000	X		=		SCM
140	X	893.000	X		=		SCM
141	X	899.000	X		=		SCM
142	X	905.000	X		=		SCM
143	X	911.000	X		=		SCM
144	X	917.000	X		=		SCM
145	X	923.000	X		=		SCM
146	X	929.000	X		=		SCM
147	X	935.000	X		=		SCM
148	X	941.000	X		=		SCM
149	X	947.000	X		=		SCM
150	X	953.000	X		=		SCM
151	X	959.000	X		=		SCM
152	X	965.000	X		=		SCM
153	X	971.000	X		=		SCM
154	X	977.000	X		=		SCM
155	X	983.000	X		=		SCM
156	X	989.000	X		=		SCM
157	X	995.000	X		=		SCM
158	X	1001.000	X		=		SCM
159	X	1007.000	X		=		SCM
160	X	1013.000	X		=		SCM
161	X	1019.000	X		=		SCM
162	X	1025.000	X		=		SCM
163	X	1031.000	X		=		SCM
164	X	1037.000	X		=		SCM
165	X	1043.000	X		=		SCM
166	X	1049.000	X		=		SCM
167	X	1055.000	X		=		SCM
168	X	1061.000	X		=		SCM
169	X	1067.000	X		=		SCM
170	X	1073.000	X		=		SCM
171	X	1079.000	X		=		SCM
172	X	1085.000	X		=		SCM
173	X	1091.000	X		=		SCM
174	X	1097.000	X		=		SCM
175	X	1103.000	X		=		SCM
176	X	1109.000	X		=		SCM
177	X	1115.000	X		=		SCM
178	X	1121.000	X		=		SCM
179	X	1127.000	X		=		SCM
180	X	1133.000	X		=		SCM
181	X	1139.000	X		=		SCM
182	X	1145.000	X		=		SCM
183	X	1151.000	X		=		SCM
184	X	1157.000	X		=		SCM
185	X	1163.000	X		=		SCM
186	X	1169.000	X		=		SCM
187	X	1175.000	X		=		SCM
188	X	1181.000	X		=		SCM
189	X	1187.000	X		=		SCM
190	X	1193.000	X		=		SCM
191	X	1199.000	X		=		SCM
192	X	1205.000	X		=		SCM
193	X	1211.000	X		=		SCM
194	X	1217.000	X		=		SCM
195	X	1223.000	X		=		SCM
196	X	1229.000	X		=		SCM
197	X	1235.000	X		=		SCM
198	X	1241.000	X		=		SCM
199	X	1247.000	X		=		SCM
200	X	1253.000	X		=		SCM
201	X	1259.000	X		=		SCM
202	X	1265.000	X		=		SCM
203	X	1271.000	X		=		SCM
204	X	1277.000	X		=		SCM
205	X	1283.000	X		=		SCM
206	X	1289.000	X		=		SCM