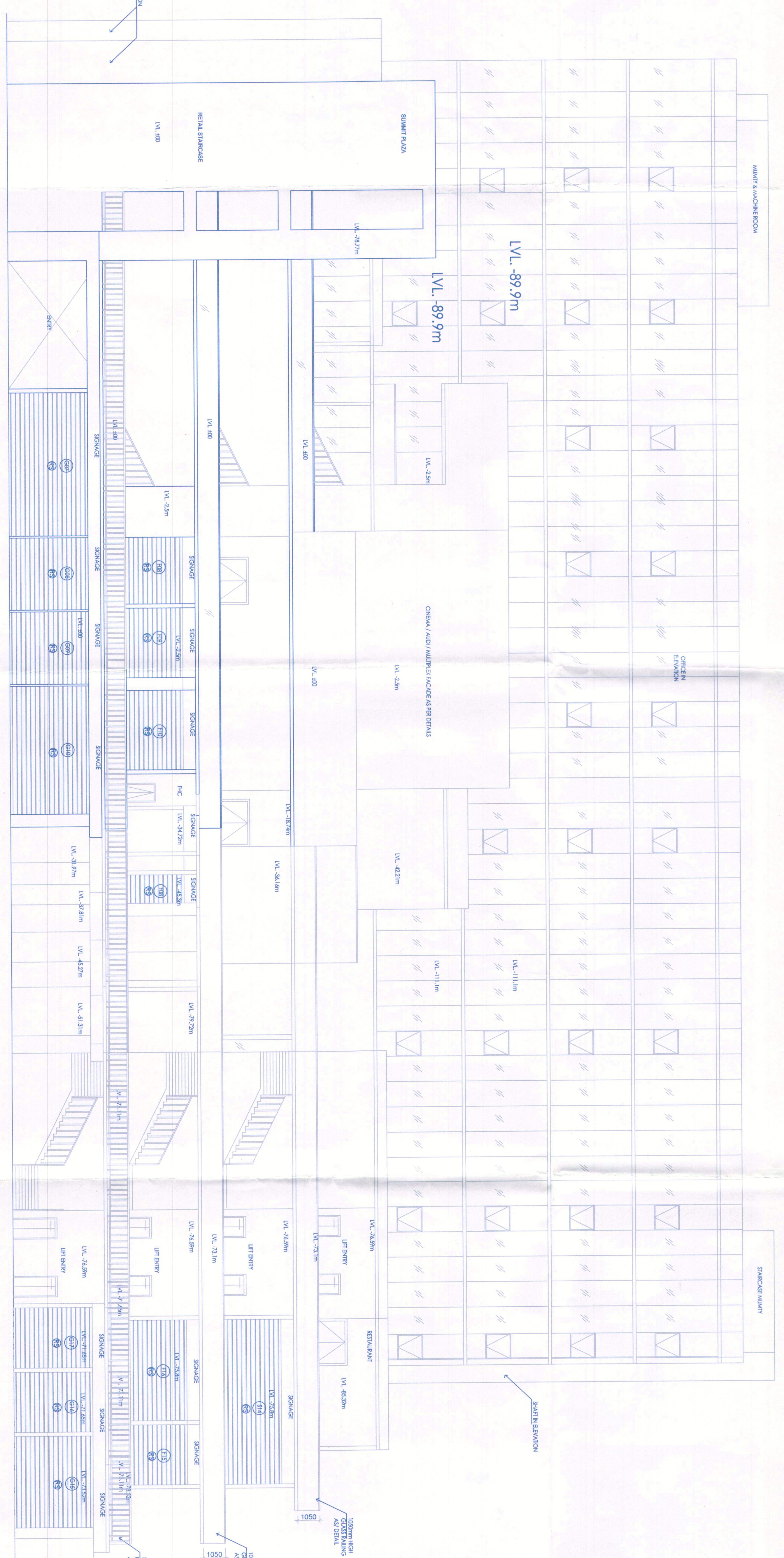


- Note :-
1. BUILDING HAS AUTOMATIC SPRINKLER SYSTEM.
 2. BUILDING WILL BE DESIGNED (STRUCTURES) AS PER RELEVANT IS CODES FOR EARTH QUAKE RESISTANCE.
 3. BUILDING IS ARTIFICIALLY LIGHTED MECHANICALLY VENTILATED AND AIR CONDITIONED WITH 100% POWER BACKUP.
 4. ALL THE SHAFT WILL BE PROVIDED WITH GALVANIZED METAL GRATING FLUSH TO THE ROAD LEVEL TO TAKE FIRE TENDER LOAD.



ELEVATION-B

ROOF	LVL.+36750	2550
TERRACE	LVL.+34200	4050
7th FLOOR	LVL.+30150	4050
6th FLOOR	LVL.+26100	4050
5th FLOOR	LVL.+22050	4050
4th FLOOR	LVL.+18000	4050
3rd FLOOR	LVL.+13950	4050
2nd FLOOR	LVL.+9450	4500
1st FLOOR	LVL.+4950	4500
GROUND FLOOR (LVL.+450)		4500



ELEVATION-D

ROOF	LVL.+36750	2550
TERRACE	LVL.+34200	4050
7th FLOOR	LVL.+30150	4050
6th FLOOR	LVL.+26100	4050
5th FLOOR	LVL.+22050	4050
4th FLOOR	LVL.+18000	4050
3rd FLOOR	LVL.+13950	4050
2nd FLOOR	LVL.+9450	4500
1st FLOOR	LVL.+4950	4500
GROUND FLOOR (LVL.+450)		4500

PROJECT:-
 PROPOSED BUILDING PLAN OF (SUMMIT PLAZA)
 COMMERCIAL SITE UNDER TRANSIT ORIENTED
 DEVELOPMENT (TOD) POLICY DATED 09.02.2016
 ON THE AREA MEASURING 2.65 ACRES FALLING
 IN RESIDENTIAL CUM GROUP HOUSING COLONY
 NAMELY DLF-6 (FORMERLY KNOWN AS DLF CITY
 PHASE-V), GURUGRAM BEING DEVELOPED
 BY DLF LIMITED.



RSMS ARCHITECTS PVT. LTD.
 69, Nara Niwas Bhaiwari Kunj
 (Behind D2), Vasant Kunj,
 New Delhi-110070.
 Tel: 011-26898616, 26898617
 www.rsms-arch.com

13 APRIL - 2021 Scale : 1:100
 Drawing Title :- ELEVATION-B & D
 Drawing No. :- R-14

ARCHITECTS SEAL & SIGNATURE
 OWNER'S SEAL & SIGNATURE

APPROVED BY
 PROJECT MANAGER
 RSM ARCHITECTS