

NOTE :-

1. BUILDING HAS AUTOMATIC SPRINKLER SYSTEM.
2. BUILDING WILL BE DESIGNED (STRUCTURES) AS PER RELEVANT IS CODES FOR EARTH QUAKE RESISTANCE.
3. BUILDING IS ARTIFICIALLY LIGHTED MECHANICALLY VENTILATED AND AIR CONDITIONED WITH 100% POWER BACKUP.
4. ALL THE SHAFT WILL BE PROVIDED WITH GALVANIZED METAL GRATING FLUSH TO THE ROAD LEVEL TO TAKE FIRE TENDER LOAD.

PROJECT:
 PROPOSED BUILDING PLAN OF (SUMMIT PLAZA)
 COMMERCIAL SITE UNDER TRANSIT ORIENTED
 DEVELOPMENT (TOD) POLICY DATED 09.02.2016
 ON THE AREA MEASURING 2.65 ACRES FALLING
 IN RESIDENTIAL CUM-GROUP HOUSING COLONY
 NAMEDLY DLF-5 (FORMERLY KNOWN AS DLF CITY
 PHASE-V), GURUGRAM BEING DEVELOPED
 BY DLF LIMITED.

ASSOCIATE ARCHITECTS
RISIMIS ARCHITECTS
 RMS ARCHITECTS PVT. LTD.
 69, Nara Niwas (Bhawani Kunj)
 (Behind D2), Vasant Kunj,
 New Delhi-110070.
 Tel:-011-26888616, 26888617
 www.rsimis-arch.com

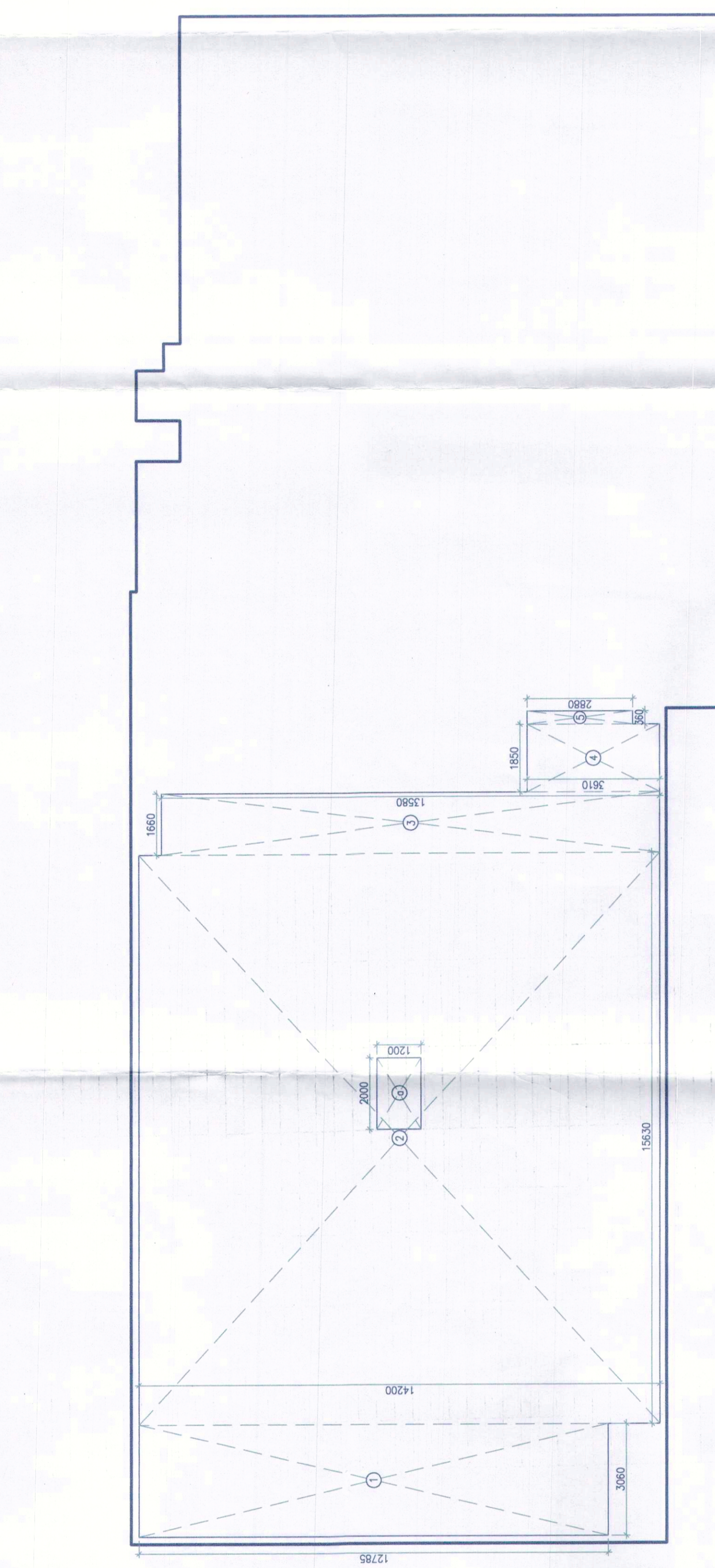
Director
 Mr. Vikram Singh
 Director
 Mr. Anil Kumar
 Director
 Mr. Arun Kumar

ADIPHO
 ADIPHO
 ADIPHO

JD
 PA
 ATT

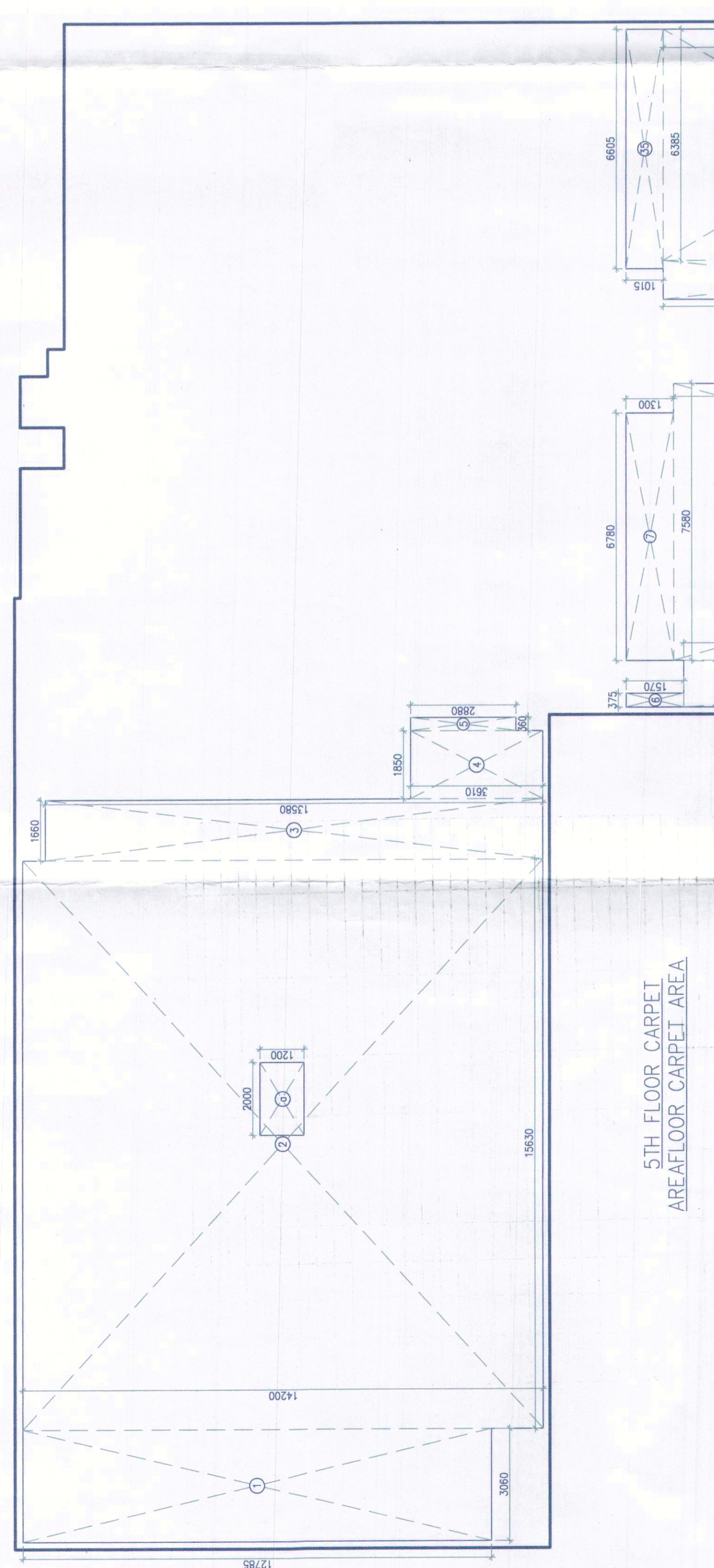
ARCHITECT'S SEAL & SIGNATURE
 OWNER'S SEAL & SIGNATURE

13 APRIL - 2021 Scale : 1:100
 Drawing Title :-
 4TH & 5TH FLOOR AREA & 5TH FLOOR AREA
 Drawing No. :-
 CP-05



4TH FLOOR CARPET AREA FLOOR CARPET AREA

GROSS-A		GROSS-B		TOTAL	
1	3,000	X	12,735	=	39,122
2	1	X	14,200	=	22,149
3	1	X	13,580	=	22,543
4	1	X	2,800	=	1,037
5	1	X	1,570	=	9,589
6	1	X	2,700	=	8,141
7	1	X	7,700	=	20,545
8	1	X	1,900	=	7,388
9	1	X	8,130	=	20,545
10	1	X	1,900	=	7,388
11	1	X	1,900	=	7,388
12	1	X	1,900	=	7,388
13	1	X	1,900	=	7,388
14	1	X	1,900	=	7,388
15	1	X	1,900	=	7,388
16	1	X	1,900	=	7,388
17	1	X	1,900	=	7,388
18	1	X	1,900	=	7,388
19	1	X	1,900	=	7,388
20	1	X	1,900	=	7,388
21	1	X	1,900	=	7,388
22	1	X	1,900	=	7,388
23	1	X	1,900	=	7,388
24	1	X	1,900	=	7,388
25	1	X	1,900	=	7,388
26	1	X	1,900	=	7,388
27	1	X	1,900	=	7,388
28	1	X	1,900	=	7,388
29	1	X	1,900	=	7,388
30	1	X	1,900	=	7,388
31	1	X	1,900	=	7,388
32	1	X	1,900	=	7,388
33	1	X	1,900	=	7,388
34	1	X	1,900	=	7,388
35	1	X	1,900	=	7,388
TOTAL				=	832,883
GROSS-B					
a	1	X	2,400	=	2,400
b	1	X	1,800	=	1,440
TOTAL				=	3,840
TOTAL CARPET AREA OF 4TH FLOOR				=	832,883
TOTAL				=	832,883



5TH FLOOR CARPET AREA FLOOR CARPET AREA

GROSS-A		GROSS-B		TOTAL	
1	3,000	X	12,735	=	39,122
2	1	X	14,200	=	22,149
3	1	X	13,580	=	22,543
4	1	X	2,800	=	1,037
5	1	X	1,570	=	9,589
6	1	X	2,700	=	8,141
7	1	X	7,700	=	20,545
8	1	X	1,900	=	7,388
9	1	X	8,130	=	20,545
10	1	X	1,900	=	7,388
11	1	X	1,900	=	7,388
12	1	X	1,900	=	7,388
13	1	X	1,900	=	7,388
14	1	X	1,900	=	7,388
15	1	X	1,900	=	7,388
16	1	X	1,900	=	7,388
17	1	X	1,900	=	7,388
18	1	X	1,900	=	7,388
19	1	X	1,900	=	7,388
20	1	X	1,900	=	7,388
21	1	X	1,900	=	7,388
22	1	X	1,900	=	7,388
23	1	X	1,900	=	7,388
24	1	X	1,900	=	7,388
25	1	X	1,900	=	7,388
26	1	X	1,900	=	7,388
27	1	X	1,900	=	7,388
28	1	X	1,900	=	7,388
29	1	X	1,900	=	7,388
30	1	X	1,900	=	7,388
31	1	X	1,900	=	7,388
32	1	X	1,900	=	7,388
33	1	X	1,900	=	7,388
34	1	X	1,900	=	7,388
35	1	X	1,900	=	7,388
TOTAL				=	832,883
GROSS-B					
a	1	X	2,400	=	2,400
b	1	X	1,800	=	1,440
TOTAL				=	3,840
TOTAL CARPET AREA OF 5TH FLOOR				=	832,883
TOTAL				=	832,883