

1. BUILDINGS WILL BE DESIGNED (STRUCTURES) AS PER RELEVANT IS CODES FOR EARTH QUAKE RESISTANCE.
 2. THE BUILDING IS ARTIFICIALLY LIT AND MECHANICALLY VENTILATED.

LEGEND:-

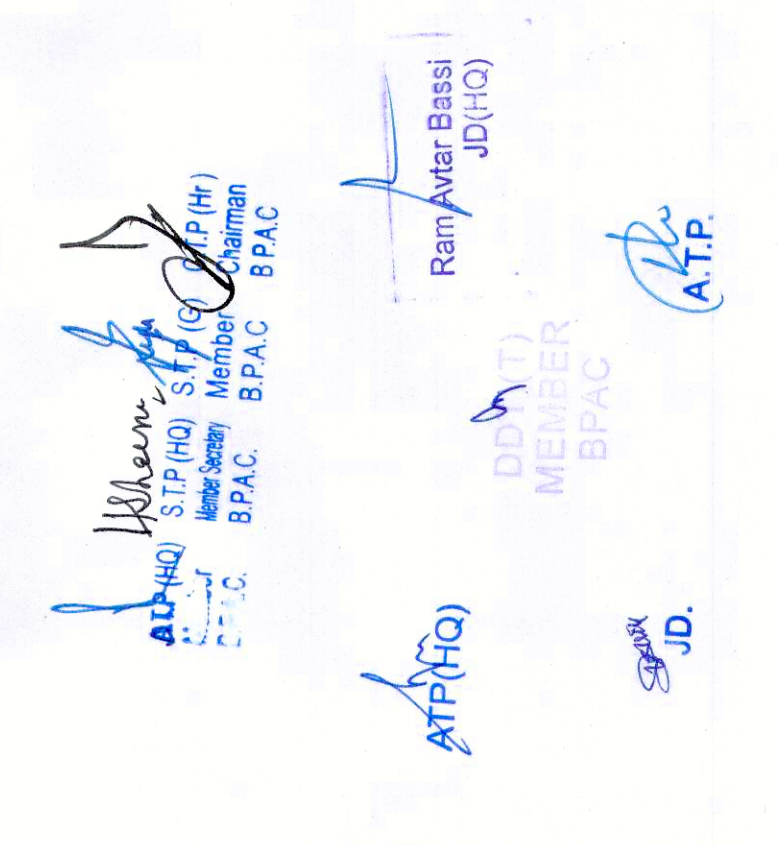
PROJECT :

REVISED BUILDING PLANS OF GROUP HOUSING COLONY AREA MEASURING 25.087 ACRES (LICENCE NO. 123 OF 2012 DATED 20-12-2012 IN SECTOR-63, GURGAON BEING DEVELOPED BY ARJIE BUILDERS & DEVELOPERS PVT. LTD. AND OTHERS IN COLLABORATION WITH DLF HOME DEVELOPERS LTD/EARLIER KNOWN AS DLF NEW GURGAON HOME DEVELOPERS PVT.LTD)

ARCHITECTURE:
ARCOP

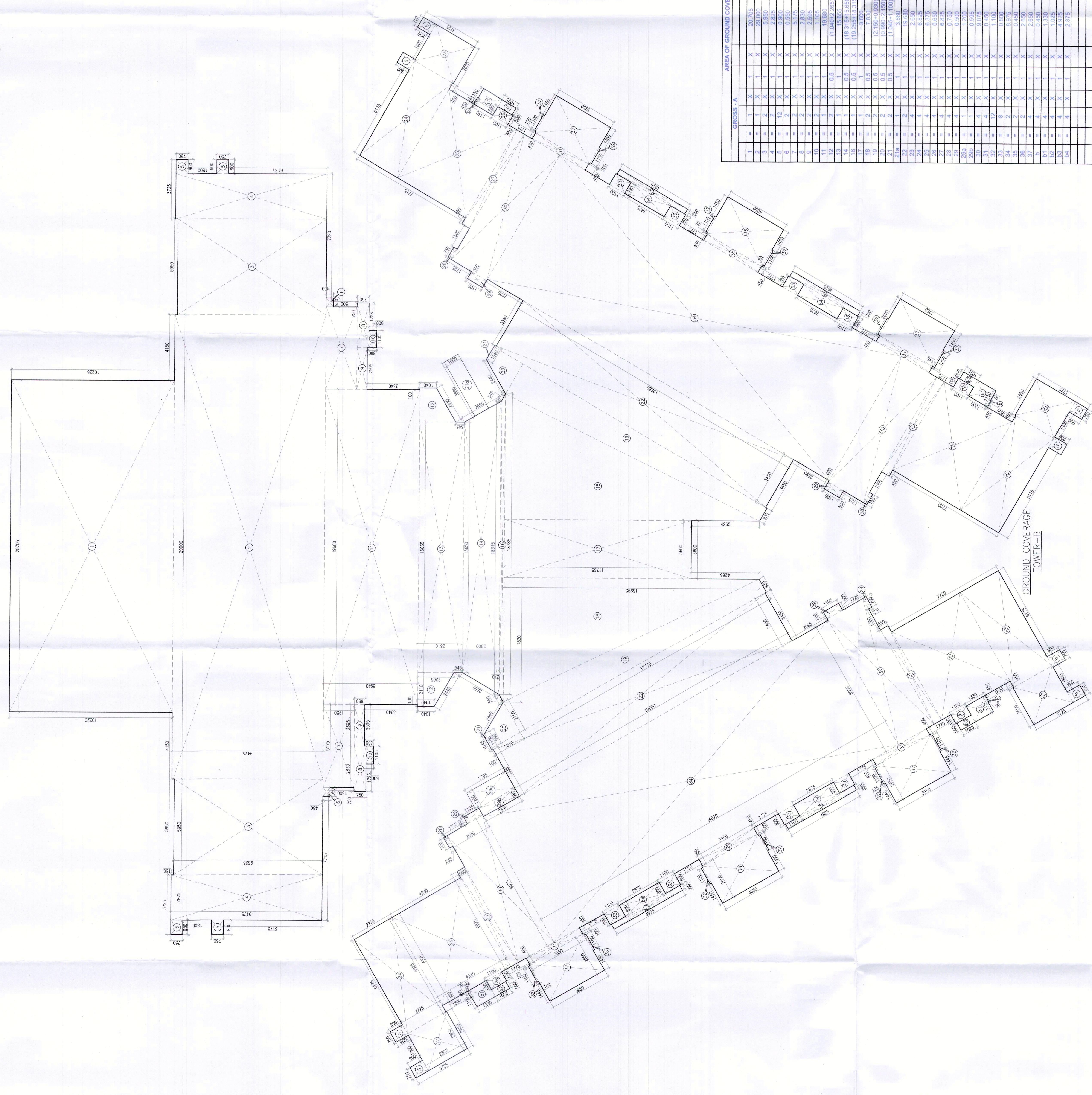
ARCOP ASSOCIATES PVT LTD
 Plot No. 36B, Sector-32, Institutional Area
 Gurugram, Haryana, 122001, India
 Tel.: 91-124-4595500
 Fax: 91-124-4595550

TO BE SEEN WITH THIS OFFICE MEMO NO. 20-017 DATED: 20-01-2023



ARCHITECT'S SEAL & SIGNATURE
 OWNER'S SEAL & SIGNATURE
 DLF Home Developers Limited

JAN - 2023. Scale : 1:100
 Drawing No:- TB-02
 Drawing Title:- GROUND COVERAGE AREA CALCULATION TOWER-B



GROSS 'A'		AREA OF GROUND COVERAGE (TOWER - B)	
1	1	1	211.005
2	1	1	274.775
3	1	1	513.524
4	1	1	8.100
5	1	1	8.100
6	1	1	20.163
7	1	1	4.242
8	1	1	1.076
9	1	1	118.899
10	1	1	1.076
11	1	1	5.845
12	1	1	4.974
13	1	1	58.000
14	1	1	125.241
15	1	1	4.974
16	1	1	61.702
17	1	1	9.215
18	1	1	3.450
19	1	1	28.845
20	1	1	72.726
21	1	1	2.415
22	1	1	2.820
23	1	1	2.820
24	1	1	1.100
25	1	1	1.100
26	1	1	1.100
27	1	1	1.100
28	1	1	1.100
29	1	1	1.100
30	1	1	1.100
31	1	1	1.100
32	1	1	1.100
33	1	1	1.100
34	1	1	1.100
35	1	1	1.100
36	1	1	1.100
37	1	1	1.100
38	1	1	1.100
39	1	1	1.100
40	1	1	1.100
41	1	1	1.100
42	1	1	1.100
43	1	1	1.100
44	1	1	1.100
45	1	1	1.100
46	1	1	1.100
47	1	1	1.100
48	1	1	1.100
49	1	1	1.100
50	1	1	1.100
51	1	1	1.100
52	1	1	1.100
53	1	1	1.100
54	1	1	1.100
55	1	1	1.100
56	1	1	1.100
57	1	1	1.100
58	1	1	1.100
59	1	1	1.100
60	1	1	1.100
61	1	1	1.100
62	1	1	1.100
63	1	1	1.100
64	1	1	1.100
65	1	1	1.100
66	1	1	1.100
67	1	1	1.100
68	1	1	1.100
69	1	1	1.100
70	1	1	1.100
71	1	1	1.100
72	1	1	1.100
73	1	1	1.100
74	1	1	1.100
75	1	1	1.100
76	1	1	1.100
77	1	1	1.100
78	1	1	1.100
79	1	1	1.100
80	1	1	1.100
81	1	1	1.100
82	1	1	1.100
83	1	1	1.100
84	1	1	1.100
85	1	1	1.100
86	1	1	1.100
87	1	1	1.100
88	1	1	1.100
89	1	1	1.100
90	1	1	1.100
91	1	1	1.100
92	1	1	1.100
93	1	1	1.100
94	1	1	1.100
95	1	1	1.100
96	1	1	1.100
97	1	1	1.100
98	1	1	1.100
99	1	1	1.100
100	1	1	1.100
TOTAL			2172.895