

NOTE :-
1. BUILDING WILL BE DESIGNED (STRUCTURES)
AS PER RELEVANT IS CODES FOR EARTH QUAKE
RESISTANCE.
2. THE BUILDING IS ARTIFICIALLY LIT AND
MECHANICALLY VENTILATED.

LEGEND :-

PROJECT : THE ARBOUR

REVISED (2nd Revision) BUILDING PLANS OF
GROUP HOUSING COLONY AREA MEASURING
25.087 ACRES (LICENCE NO. 123 OF 2012 DATED
20-12-2012 IN SECTOR-63, GURGAON BEING
DEVELOPED BY ARLE BUILDERS &
DEVELOPERS PVT. LTD. AND OTHERS IN
COLLABORATION WITH DLF HOME
DEVELOPERS LTD (EARLIER KNOWN AS DLF
NEW GURGAON HOME DEVELOPERS PVT LTD)

ARCHITECTURE:

ARCOP

ARCOP ASSOCIATES PVT LTD
Plot No. 36B, Sector-32, Institutional Area,
Gurgaon, Haryana, 122001, India
Tel.: 91-124-4595500
91-124-4595550
Fax: 91-124-4595550

ASSOCIATE ARCHITECTS

RISIMIS
ARCHITECTS

RSMS ARCHITECTS PVT. LTD.
69, Nara Niwas Bhawani Kunj
(Behind D2), Vasanti Kunj,
New Delhi-110070.
Tel.: 011-26898616, 26898617
www.rsms-arch.com

This is a "PROVISIONAL BUILDING PLAN"
approved only for the purpose of inviting
objections from the general public

ATP (HQ) S.P (B)
Member
B.P.A.C.

ATP (HQ) S.P (B)
Member
B.P.A.C.

ATP (HQ) S.P (B)
Member
B.P.A.C.

ATP (HQ)
MEMBER
B.P.A.C.

ATP (HQ)
MEMBER
B.P.A.C.

ATP (HQ)
MEMBER
B.P.A.C.

ATP (HQ)
MEMBER
B.P.A.C.

ATP (HQ)
MEMBER
B.P.A.C.

ATP (HQ)
MEMBER
B.P.A.C.

ATP (HQ)
MEMBER
B.P.A.C.

ATP (HQ)
MEMBER
B.P.A.C.

ATP (HQ)
MEMBER
B.P.A.C.

ATP (HQ)
MEMBER
B.P.A.C.

ATP (HQ)
MEMBER
B.P.A.C.

ATP (HQ)
MEMBER
B.P.A.C.

ATP (HQ)
MEMBER
B.P.A.C.

ATP (HQ)
MEMBER
B.P.A.C.

ATP (HQ)
MEMBER
B.P.A.C.

ATP (HQ)
MEMBER
B.P.A.C.

ATP (HQ)
MEMBER
B.P.A.C.

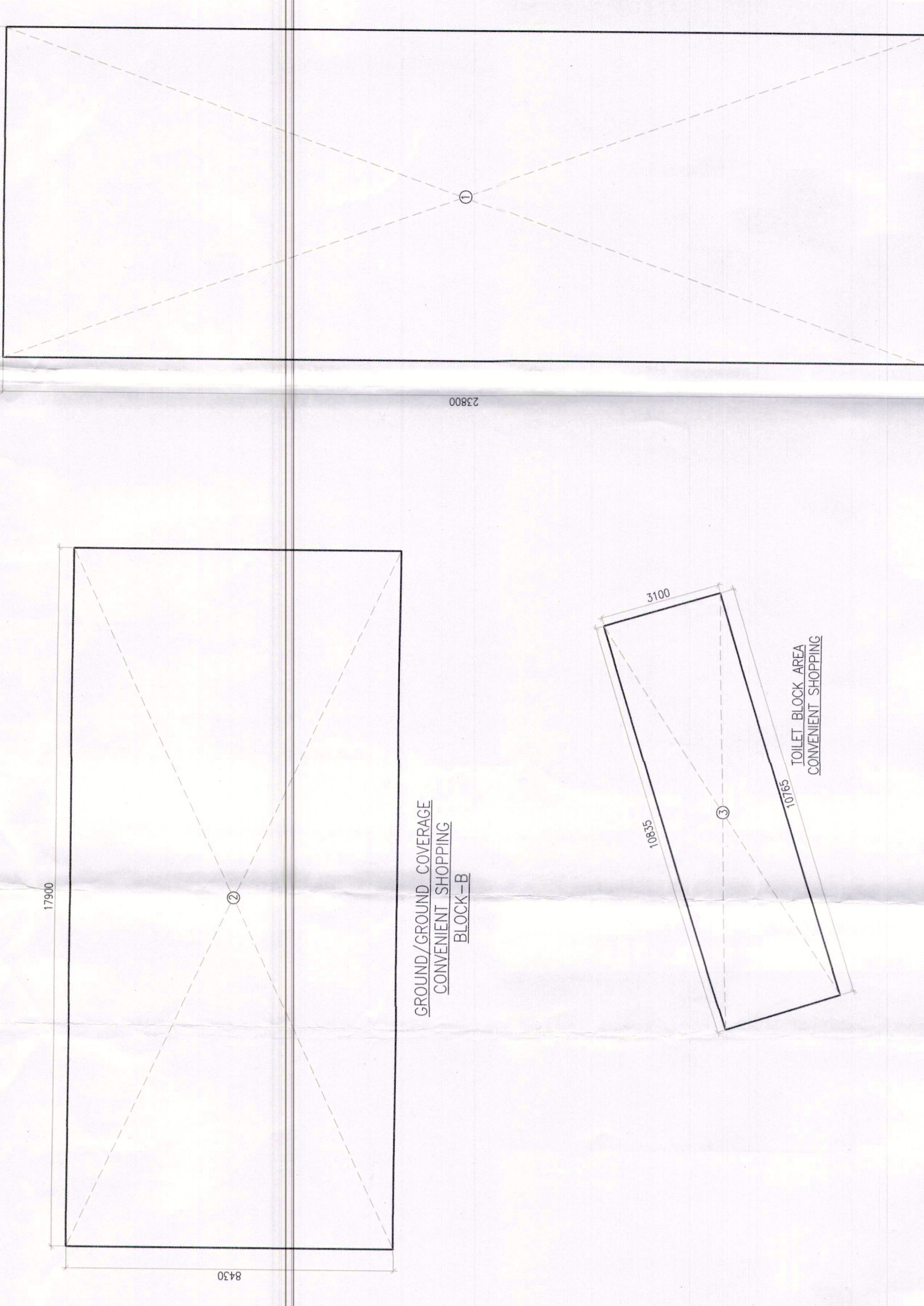
ATP (HQ)
MEMBER
B.P.A.C.

ATP (HQ)
MEMBER
B.P.A.C.

ARCHITECT'S SEAL
& SIGNATURE
[Signature]
DLF Home Developers Limited
[Signature]
Authorised Signatory

MARCH :- 2024 Scale : 1:100

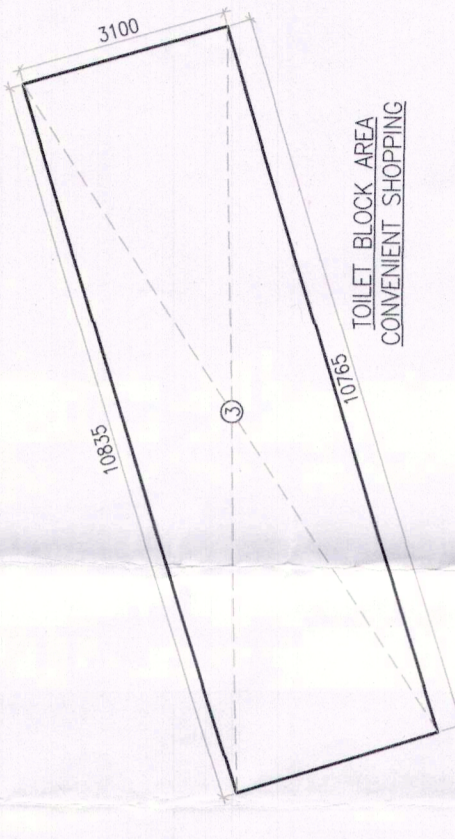
Drawing No :-
All FLOOR PLAN - SECTION ELEVATION,
SITE TOILET & AREA CALCULATION
(BLOCK-A & B)
R-01
Drawing No :-
R-01



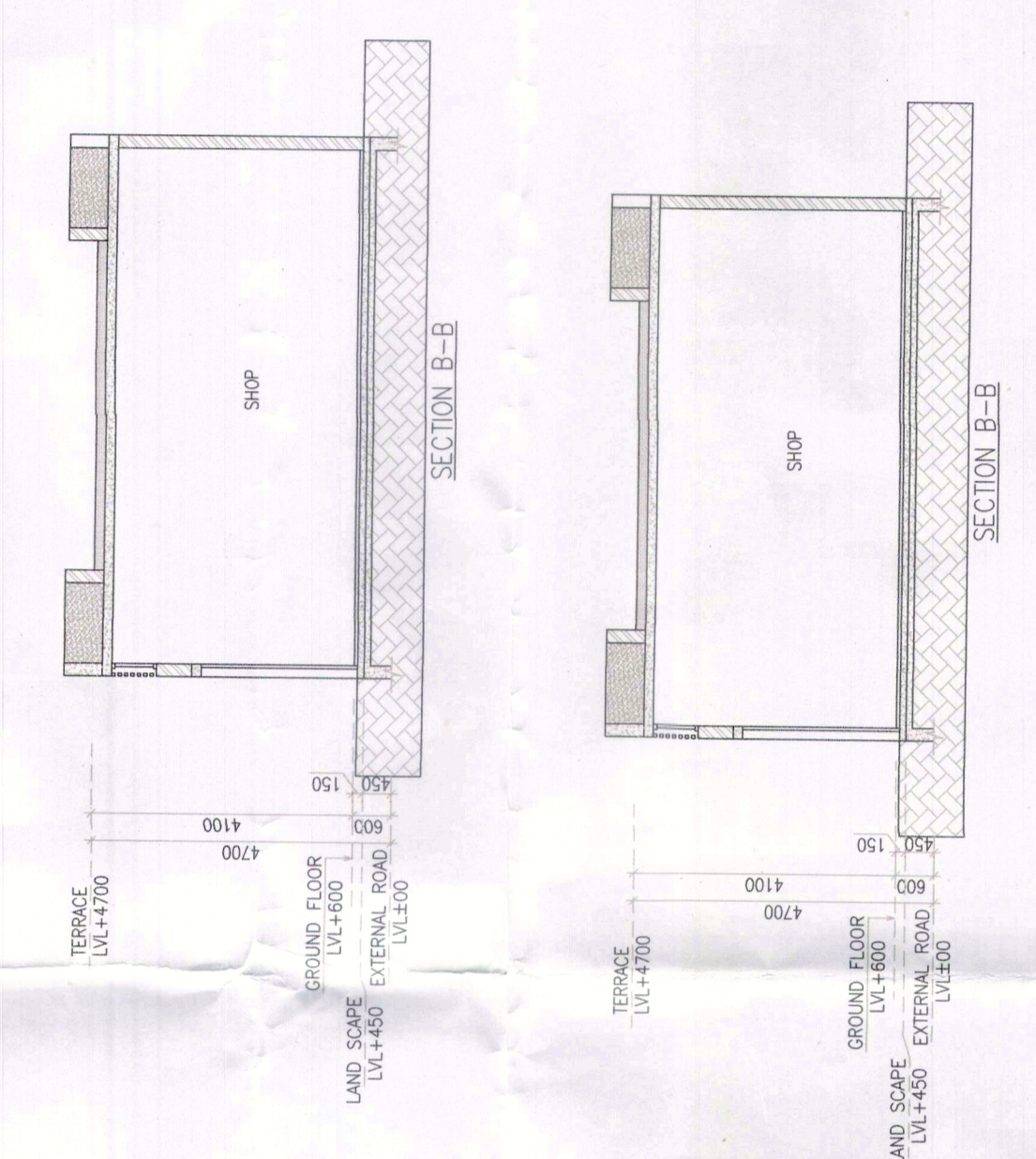
GROUND/GROUND COVERAGE
CONVENIENT SHOPPING
BLOCK-A

Sl. No.	Room No.	Area (sq.m)	Volume (cu.m)	Total Area (sq.m)	Total Volume (cu.m)
1	SHP	25.087	25.087	25.087	25.087
2	SHP	25.087	25.087	50.174	50.174
3	SHP	25.087	25.087	75.261	75.261
4	SHP	25.087	25.087	100.348	100.348
5	SHP	25.087	25.087	125.435	125.435
6	SHP	25.087	25.087	150.522	150.522
7	SHP	25.087	25.087	175.609	175.609
8	SHP	25.087	25.087	200.696	200.696
9	SHP	25.087	25.087	225.783	225.783
10	SHP	25.087	25.087	250.870	250.870
11	SHP	25.087	25.087	275.957	275.957
12	SHP	25.087	25.087	301.044	301.044
13	SHP	25.087	25.087	326.131	326.131
14	SHP	25.087	25.087	351.218	351.218
15	SHP	25.087	25.087	376.305	376.305
16	SHP	25.087	25.087	401.392	401.392
17	SHP	25.087	25.087	426.479	426.479
18	SHP	25.087	25.087	451.566	451.566
19	SHP	25.087	25.087	476.653	476.653
20	SHP	25.087	25.087	501.740	501.740
21	SHP	25.087	25.087	526.827	526.827
22	SHP	25.087	25.087	551.914	551.914
23	SHP	25.087	25.087	577.001	577.001
24	SHP	25.087	25.087	602.088	602.088
25	SHP	25.087	25.087	627.175	627.175
26	SHP	25.087	25.087	652.262	652.262
27	SHP	25.087	25.087	677.349	677.349
28	SHP	25.087	25.087	702.436	702.436
29	SHP	25.087	25.087	727.523	727.523
30	SHP	25.087	25.087	752.610	752.610
31	SHP	25.087	25.087	777.697	777.697
32	SHP	25.087	25.087	802.784	802.784
33	SHP	25.087	25.087	827.871	827.871
34	SHP	25.087	25.087	852.958	852.958
35	SHP	25.087	25.087	878.045	878.045
36	SHP	25.087	25.087	903.132	903.132
37	SHP	25.087	25.087	928.219	928.219
38	SHP	25.087	25.087	953.306	953.306
39	SHP	25.087	25.087	978.393	978.393
40	SHP	25.087	25.087	1003.480	1003.480

AREA CALCULATION OF SHOPS AND TOILET BLOCKS
BLOCK-A & B

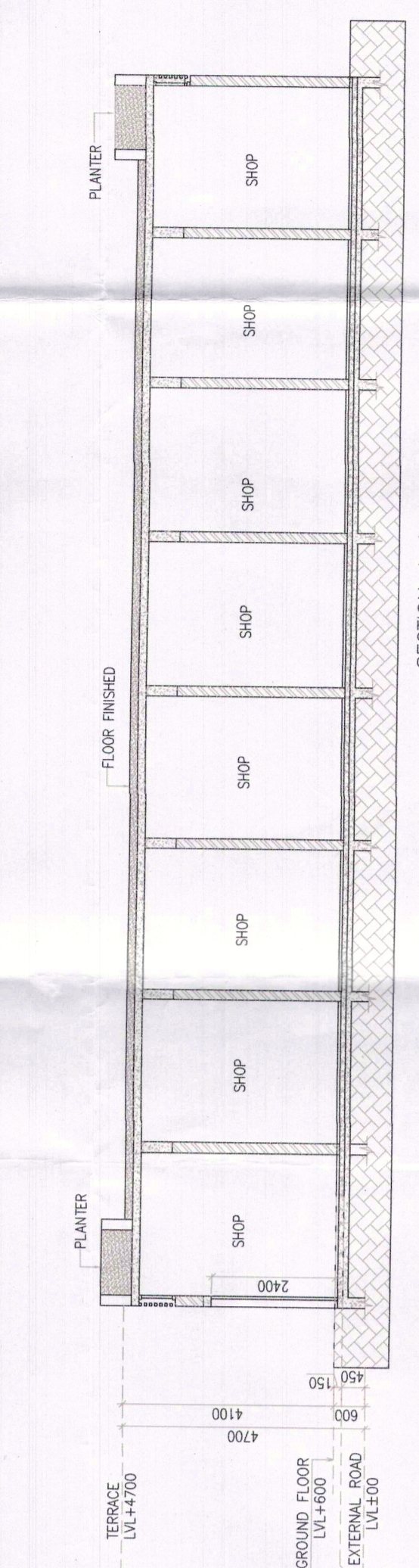


TOILET BLOCK AREA
TOTAL = 7600 x 300 = 2280000

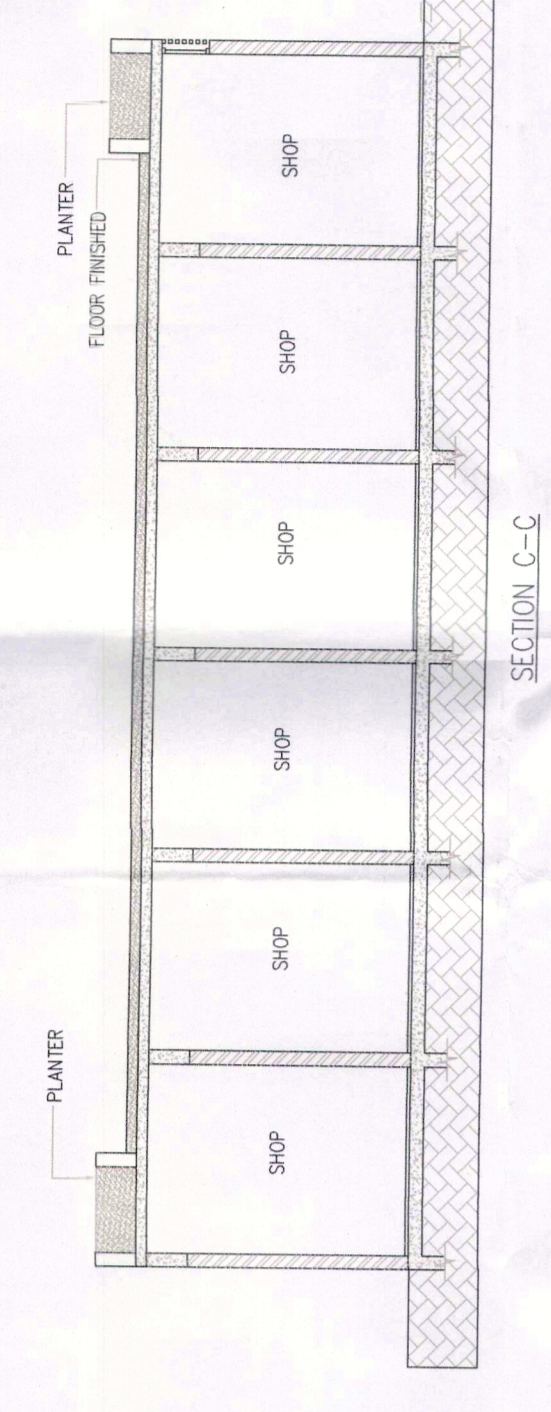


SECTION A-A

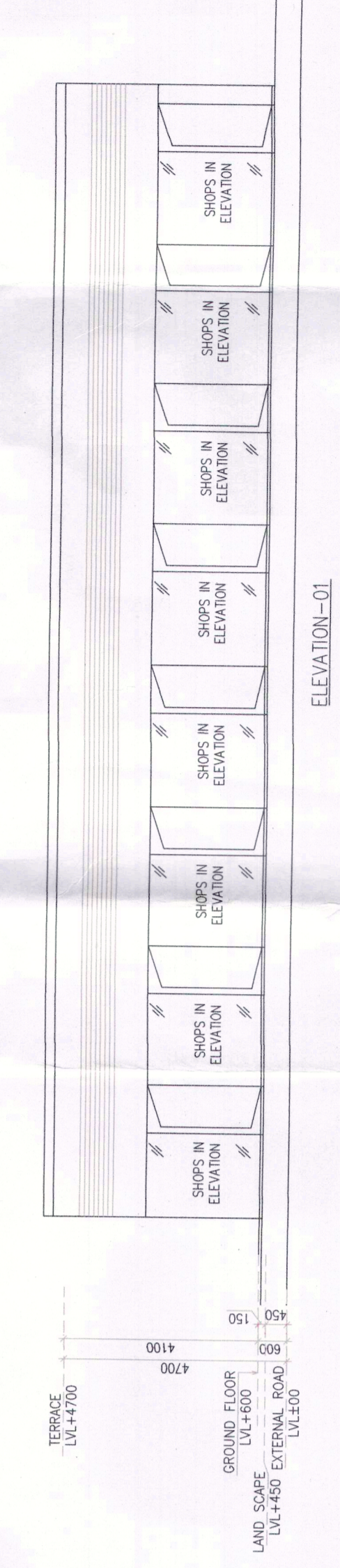
SECTION B-B



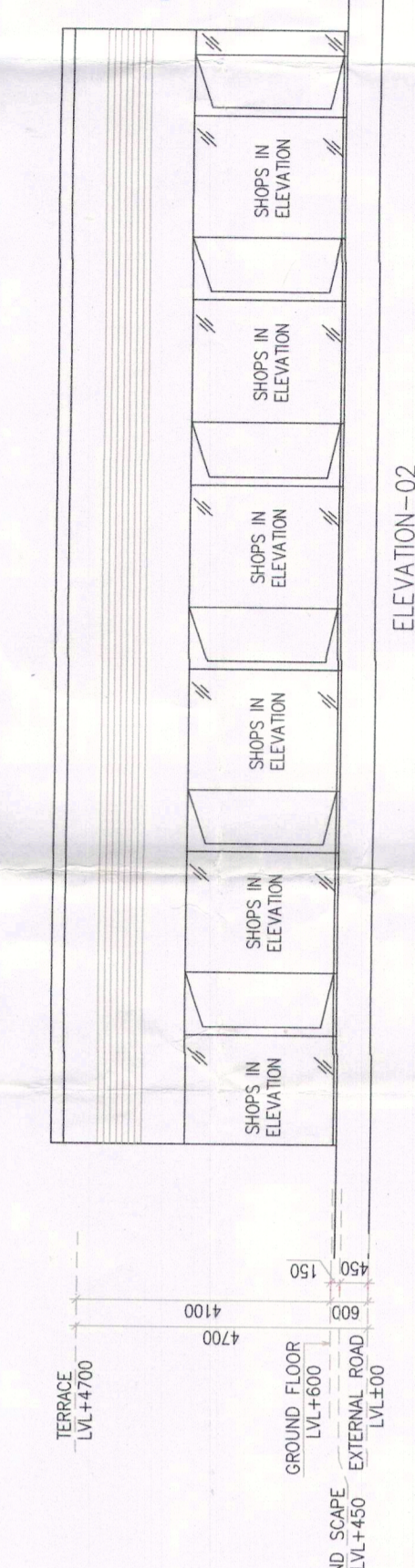
SECTION C-C



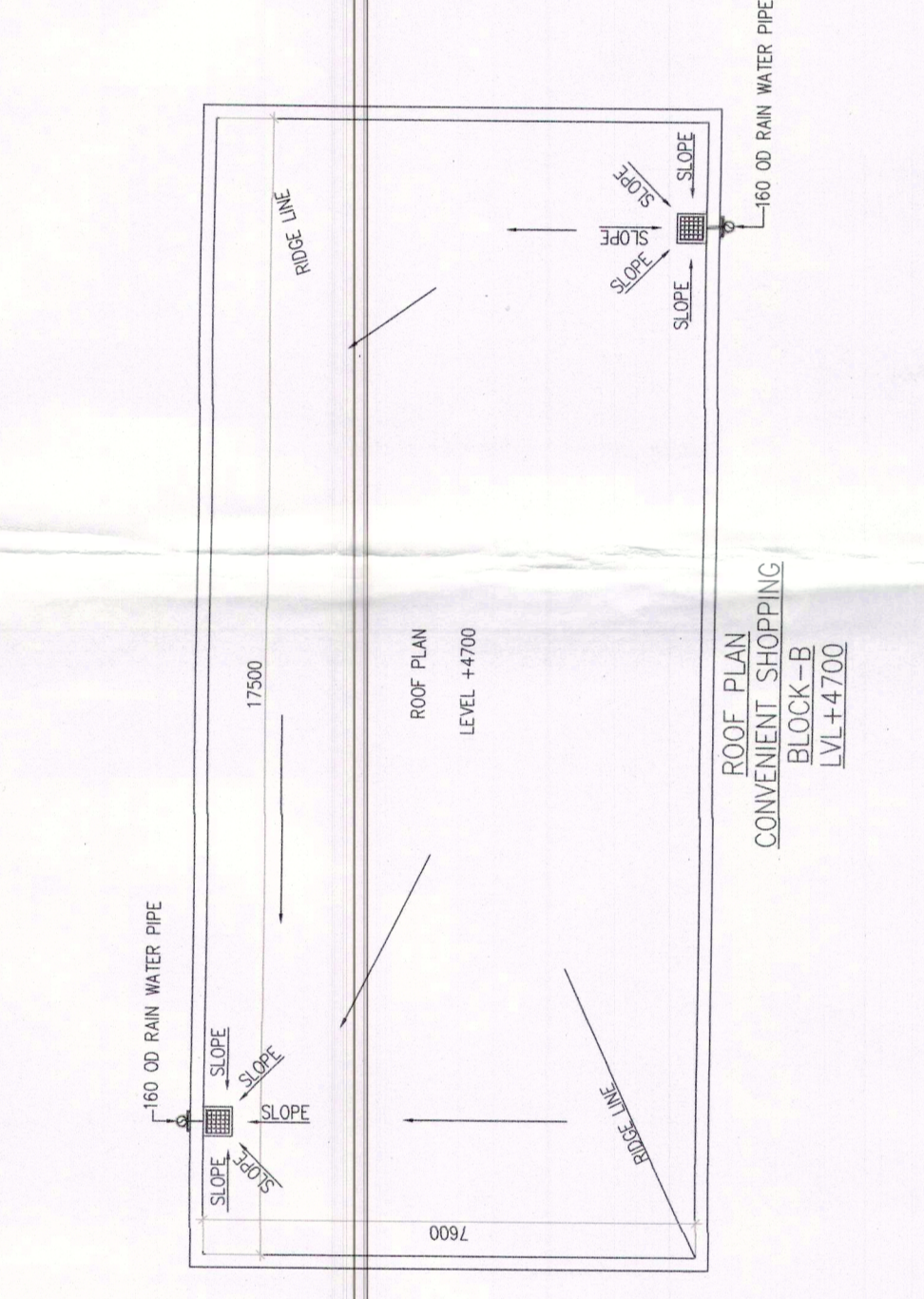
SECTION D-D



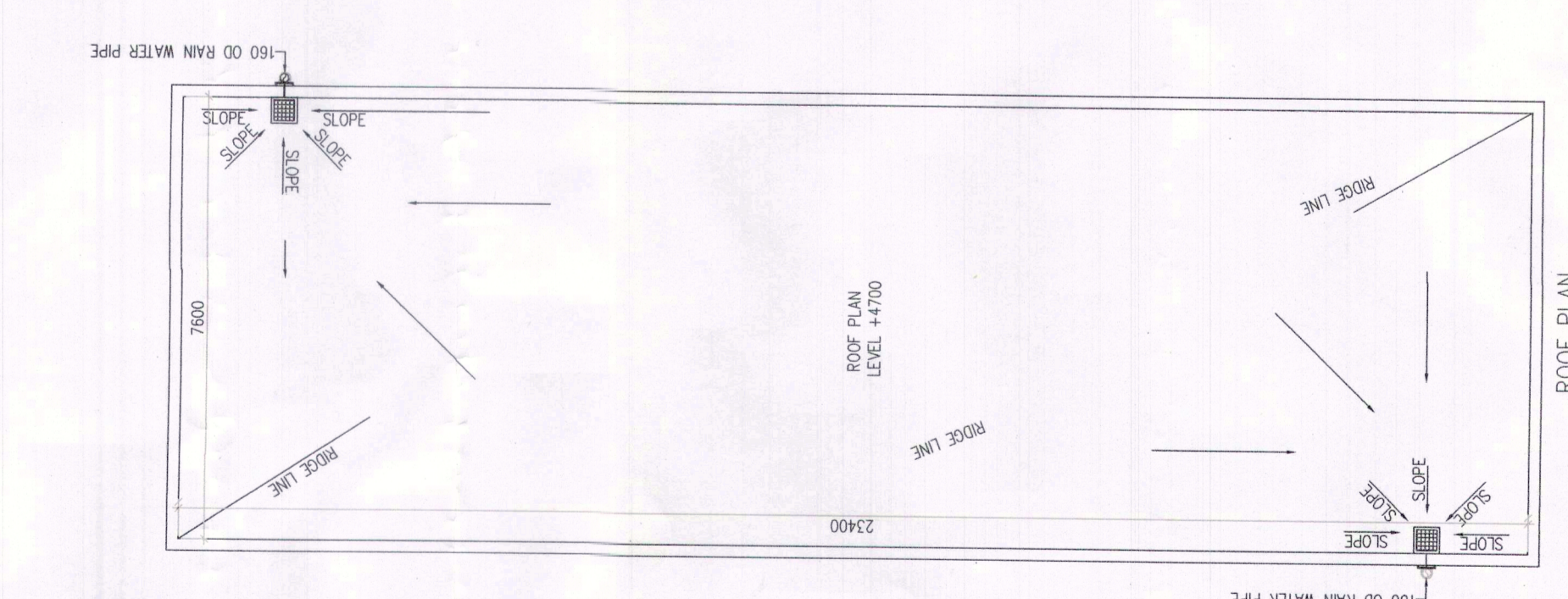
ELEVATION-D-1



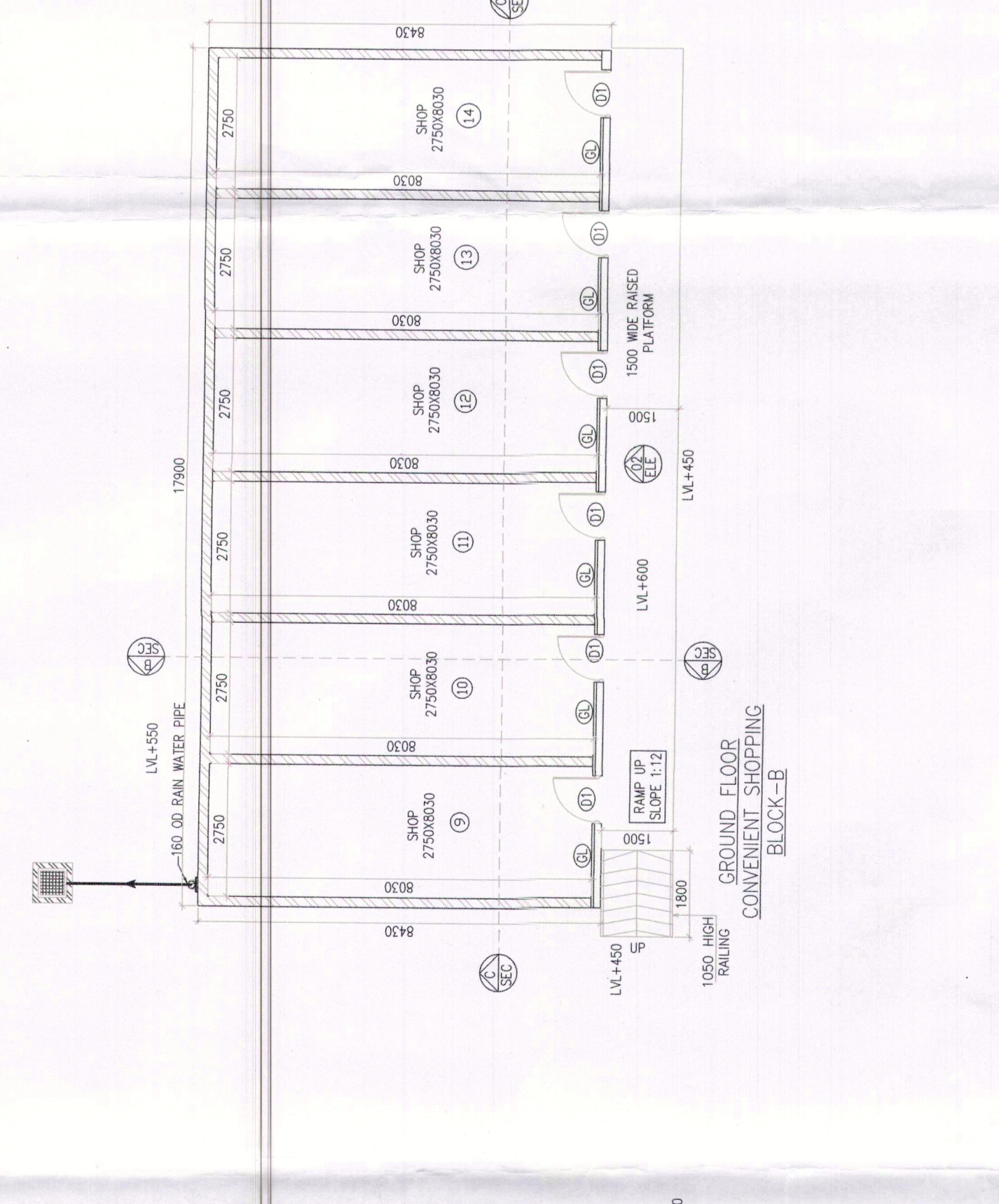
ELEVATION-D-2



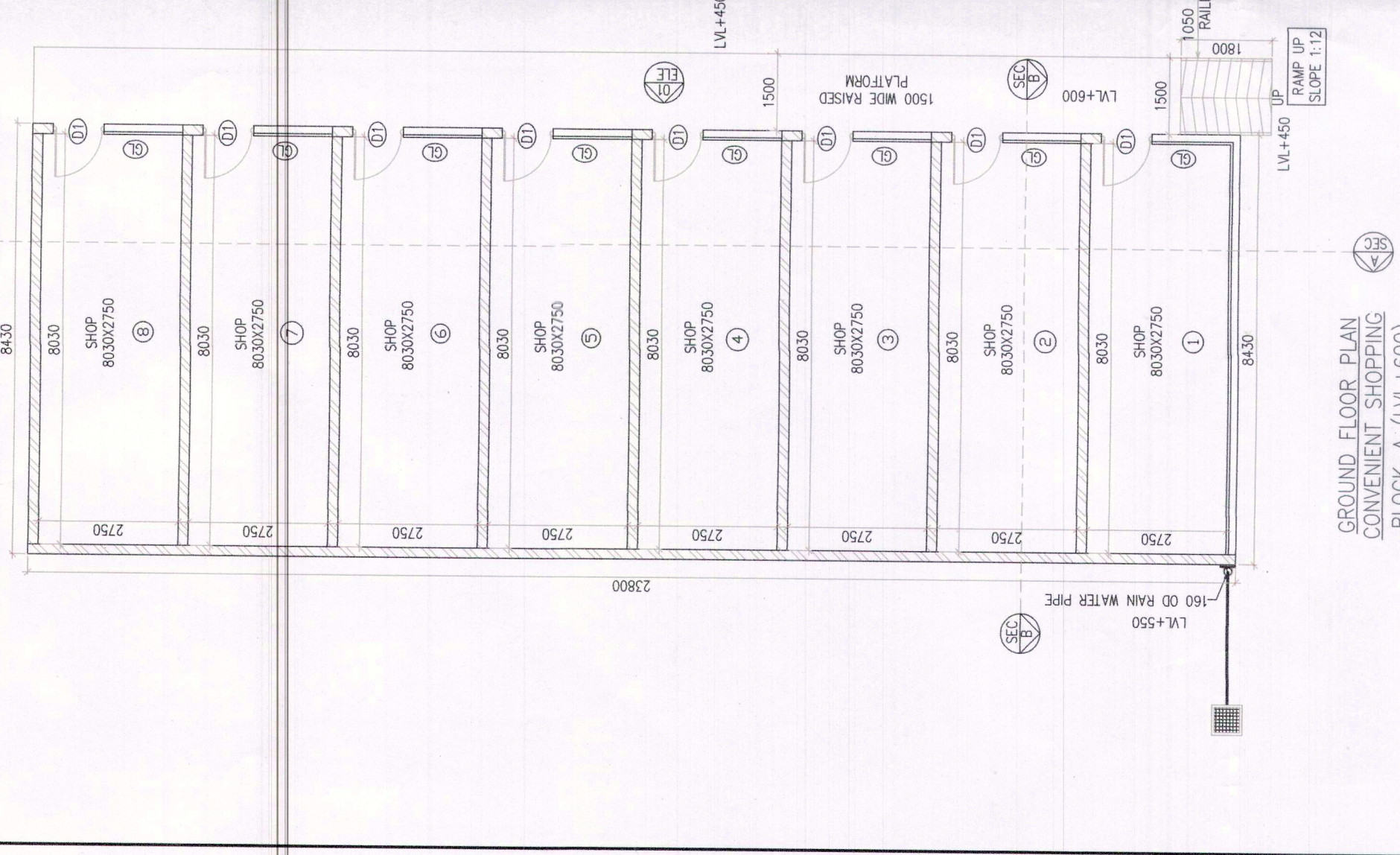
ROOF PLAN
CONVENIENT SHOPPING
BLOCK-B



ROOF PLAN
CONVENIENT SHOPPING
BLOCK-A

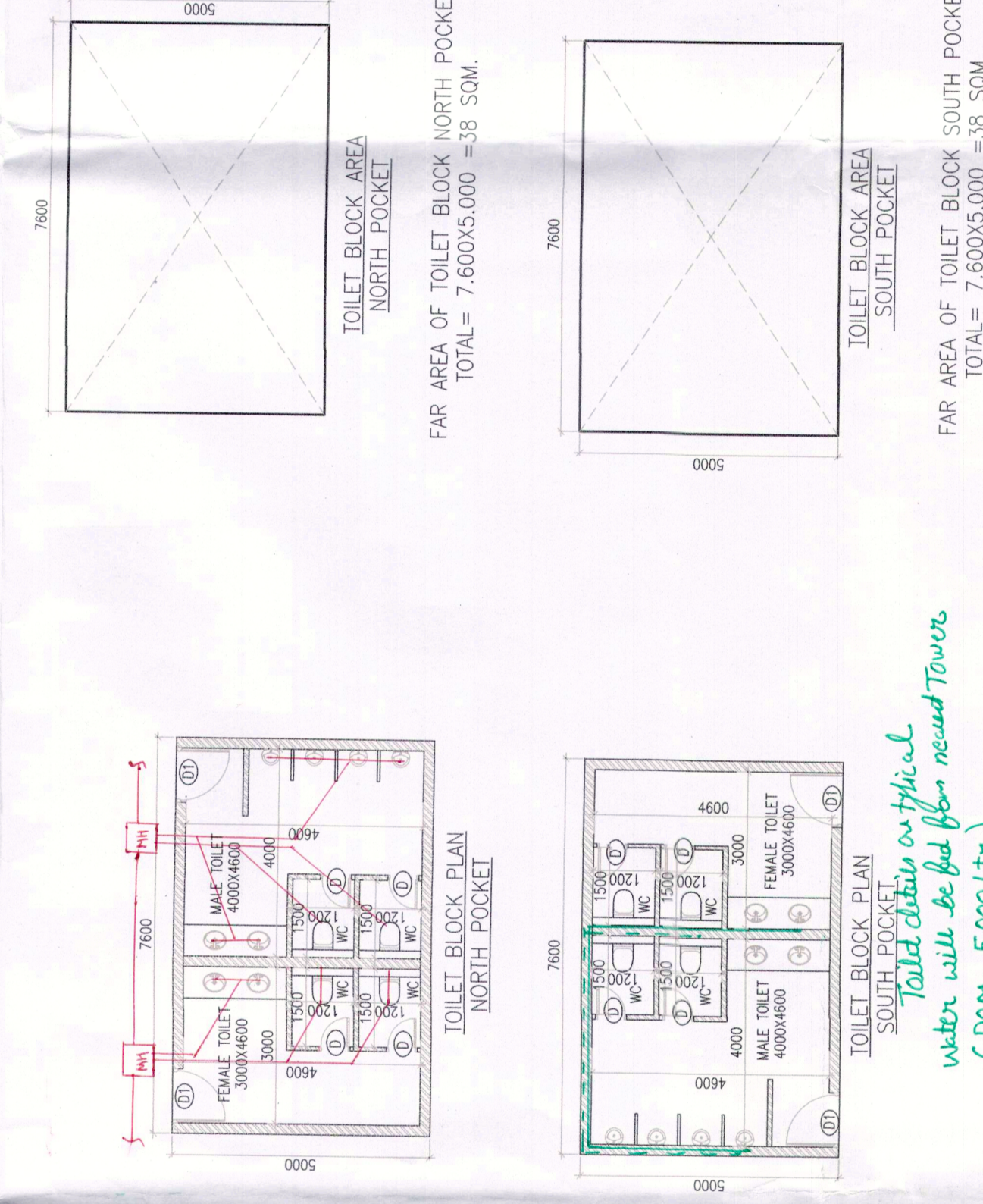


GROUND FLOOR PLAN
CONVENIENT SHOPPING
BLOCK-A



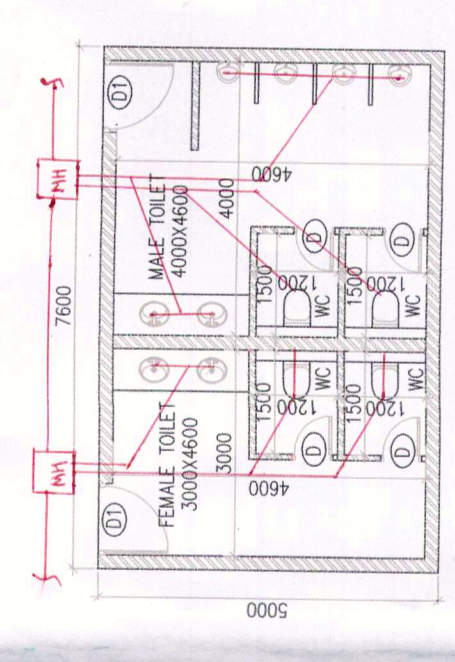
GROUND FLOOR PLAN
CONVENIENT SHOPPING
BLOCK-B

SHP	TYPE	WIDTH	HEIGHT	REN. LT.	LITEL LIT.	NUMBER
1	BT	1500	2400	-	2400	12
2	BT	1500	2400	-	2400	01
3	BT	875	2400	-	2400	02
4	BT	750	2400	-	2400	02
5	BT	1500	2400	-	2400	02
6	X	1500	300	-	2000	01

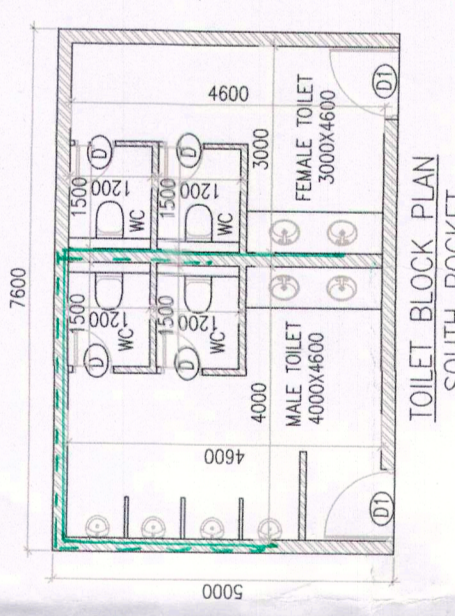


TOILET BLOCK AREA
NORTH-POCKET
TOTAL = 7600 x 300 = 2280000

TOILET BLOCK AREA
SOUTH-POCKET
TOTAL = 7600 x 300 = 2280000

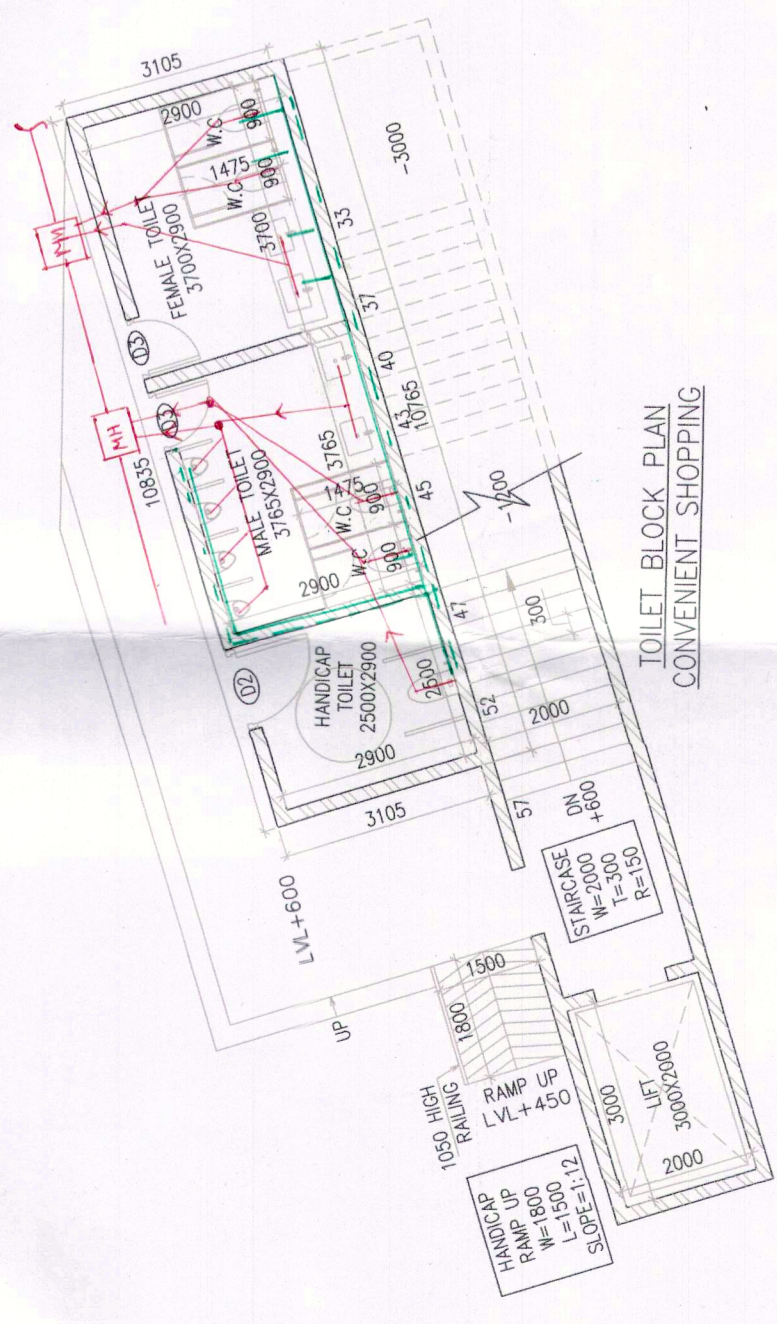


TOILET BLOCK PLAN
NORTH-POCKET



TOILET BLOCK PLAN
SOUTH-POCKET

water will be fed after second tower
(Don - 5000 ltr)
(Flu - 3000 ltr)



TOILET BLOCK PLAN
CONVENIENT SHOPPING