

Note :-

1. BUILDING WILL BE DESIGNED (STRUCTURES) AS PER RELEVANT IS CODES FOR EARTH QUAKE RESISTANCE.
2. THE BUILDING IS ARTIFICIALLY LIT AND MECHANICALLY VENTILATED.

LEGEND :-

PROJECT : THE ARBOUR

REVISED (2nd Revision) BUILDING PLANS OF GROUP HOUSING COLONY AREA MEASURING 25.087 ACRES (LICENCE NO. 123 OF 2012 DATED 20-12-2012) IN SECTOR-63, GURGAON, BEING DEVELOPED BY ARJIE BUILDERS & DEVELOPERS PVT. LTD. AND OTHERS IN COLLABORATION WITH DLF HOME DEVELOPERS LTD (EARLIER KNOWN AS DLF NEW GURGAON HOME DEVELOPERS PVT.LTD)

ARCHITECTURE:

ARCOP

ARCOP ASSOCIATES PVT LTD
 Plot No. 36B, Sector-32, Institutional Area,
 Gurugram, Haryana, 122001, India
 Tel.: 91-124-4595500
 91-124-4595550
 Fax: 91-124-4595550

ASSOCIATE ARCHITECTS

RISIMIS ARCHITECTS

RSMS ARCHITECTS PVT. LTD.,
 69, Nara Niwas, Bhowani Kunj
 (Behind D2), Vasant Kunj,
 New Delhi-110070.
 Tel.: 011-26898616, 26898617
 www.rsms-arch.com

This is a "PROVISIONAL BUILDING PLAN" approved only for the purpose of inviting objections from the general public.

Member Institution
 Member Institution
 Member Institution

ATP (H/O)
 DDM (H/O)
 MEMBER BPAC

SEB
 DINEESH KUMAR (A/H/O)

TO BE READ WITH THIS OFFICE
 REVISION NO. 2, 21.9.17
 DATED: 29.04.2024

ARCHITECT'S SEAL & SIGNATURE

OWNER'S SEAL & SIGNATURE

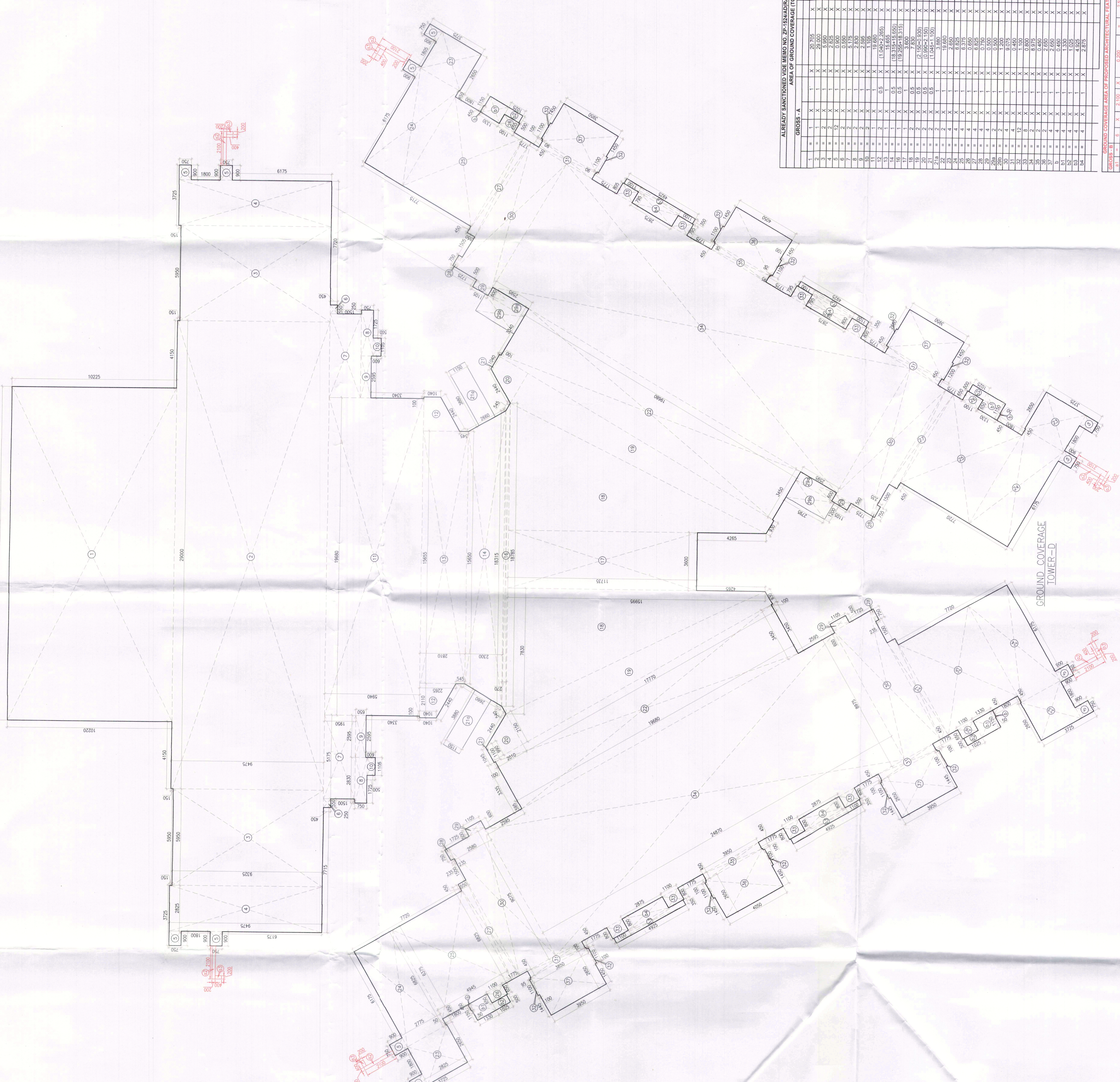
DLF Home Developers Limited
 Authorized Signatory

MARCH :- 2024 Scale :- 1:1100

Drawing Title :-

GROUND COVERAGE AREA CALCULATION TOWER-D

Drawing No. :- TD-02



| ALREADY SANCTIONED VIDE MEMO NO. ZP-1524/AD(RA)/2023/2097 DATED:20-01-2023 | | AREA OF GROUND COVERAGE TOWER-D | | | |
|--|-------------|---------------------------------|-------------|-------------|-------------|
| NO. | DESCRIPTION | AREA (SQ.M) | NO. | DESCRIPTION | AREA (SQ.M) |
| 1 | | 10.000 | 1 | | 21.100 |
| 2 | | 10.000 | 2 | | 10.000 |
| 3 | | 10.000 | 3 | | 10.000 |
| 4 | | 10.000 | 4 | | 10.000 |
| 5 | | 10.000 | 5 | | 10.000 |
| 6 | | 10.000 | 6 | | 10.000 |
| 7 | | 10.000 | 7 | | 10.000 |
| 8 | | 10.000 | 8 | | 10.000 |
| 9 | | 10.000 | 9 | | 10.000 |
| 10 | | 10.000 | 10 | | 10.000 |
| 11 | | 10.000 | 11 | | 10.000 |
| 12 | | 10.000 | 12 | | 10.000 |
| 13 | | 10.000 | 13 | | 10.000 |
| 14 | | 10.000 | 14 | | 10.000 |
| 15 | | 10.000 | 15 | | 10.000 |
| 16 | | 10.000 | 16 | | 10.000 |
| 17 | | 10.000 | 17 | | 10.000 |
| 18 | | 10.000 | 18 | | 10.000 |
| 19 | | 10.000 | 19 | | 10.000 |
| 20 | | 10.000 | 20 | | 10.000 |
| 21 | | 10.000 | 21 | | 10.000 |
| 22 | | 10.000 | 22 | | 10.000 |
| 23 | | 10.000 | 23 | | 10.000 |
| 24 | | 10.000 | 24 | | 10.000 |
| 25 | | 10.000 | 25 | | 10.000 |
| 26 | | 10.000 | 26 | | 10.000 |
| 27 | | 10.000 | 27 | | 10.000 |
| 28 | | 10.000 | 28 | | 10.000 |
| 29 | | 10.000 | 29 | | 10.000 |
| 30 | | 10.000 | 30 | | 10.000 |
| 31 | | 10.000 | 31 | | 10.000 |
| 32 | | 10.000 | 32 | | 10.000 |
| 33 | | 10.000 | 33 | | 10.000 |
| 34 | | 10.000 | 34 | | 10.000 |
| 35 | | 10.000 | 35 | | 10.000 |
| 36 | | 10.000 | 36 | | 10.000 |
| 37 | | 10.000 | 37 | | 10.000 |
| 38 | | 10.000 | 38 | | 10.000 |
| 39 | | 10.000 | 39 | | 10.000 |
| 40 | | 10.000 | 40 | | 10.000 |
| 41 | | 10.000 | 41 | | 10.000 |
| 42 | | 10.000 | 42 | | 10.000 |
| 43 | | 10.000 | 43 | | 10.000 |
| 44 | | 10.000 | 44 | | 10.000 |
| 45 | | 10.000 | 45 | | 10.000 |
| 46 | | 10.000 | 46 | | 10.000 |
| 47 | | 10.000 | 47 | | 10.000 |
| 48 | | 10.000 | 48 | | 10.000 |
| 49 | | 10.000 | 49 | | 10.000 |
| 50 | | 10.000 | 50 | | 10.000 |
| 51 | | 10.000 | 51 | | 10.000 |
| 52 | | 10.000 | 52 | | 10.000 |
| 53 | | 10.000 | 53 | | 10.000 |
| 54 | | 10.000 | 54 | | 10.000 |
| 55 | | 10.000 | 55 | | 10.000 |
| 56 | | 10.000 | 56 | | 10.000 |
| 57 | | 10.000 | 57 | | 10.000 |
| 58 | | 10.000 | 58 | | 10.000 |
| 59 | | 10.000 | 59 | | 10.000 |
| 60 | | 10.000 | 60 | | 10.000 |
| 61 | | 10.000 | 61 | | 10.000 |
| 62 | | 10.000 | 62 | | 10.000 |
| 63 | | 10.000 | 63 | | 10.000 |
| 64 | | 10.000 | 64 | | 10.000 |
| 65 | | 10.000 | 65 | | 10.000 |
| 66 | | 10.000 | 66 | | 10.000 |
| 67 | | 10.000 | 67 | | 10.000 |
| 68 | | 10.000 | 68 | | 10.000 |
| 69 | | 10.000 | 69 | | 10.000 |
| 70 | | 10.000 | 70 | | 10.000 |
| 71 | | 10.000 | 71 | | 10.000 |
| 72 | | 10.000 | 72 | | 10.000 |
| 73 | | 10.000 | 73 | | 10.000 |
| 74 | | 10.000 | 74 | | 10.000 |
| 75 | | 10.000 | 75 | | 10.000 |
| 76 | | 10.000 | 76 | | 10.000 |
| 77 | | 10.000 | 77 | | 10.000 |
| 78 | | 10.000 | 78 | | 10.000 |
| 79 | | 10.000 | 79 | | 10.000 |
| 80 | | 10.000 | 80 | | 10.000 |
| 81 | | 10.000 | 81 | | 10.000 |
| 82 | | 10.000 | 82 | | 10.000 |
| 83 | | 10.000 | 83 | | 10.000 |
| 84 | | 10.000 | 84 | | 10.000 |
| 85 | | 10.000 | 85 | | 10.000 |
| 86 | | 10.000 | 86 | | 10.000 |
| 87 | | 10.000 | 87 | | 10.000 |
| 88 | | 10.000 | 88 | | 10.000 |
| 89 | | 10.000 | 89 | | 10.000 |
| 90 | | 10.000 | 90 | | 10.000 |
| 91 | | 10.000 | 91 | | 10.000 |
| 92 | | 10.000 | 92 | | 10.000 |
| 93 | | 10.000 | 93 | | 10.000 |
| 94 | | 10.000 | 94 | | 10.000 |
| 95 | | 10.000 | 95 | | 10.000 |
| 96 | | 10.000 | 96 | | 10.000 |
| 97 | | 10.000 | 97 | | 10.000 |
| 98 | | 10.000 | 98 | | 10.000 |
| 99 | | 10.000 | 99 | | 10.000 |
| 100 | | 10.000 | 100 | | 10.000 |
| GRAND TOTAL | | 2183.331 | GRAND TOTAL | | 2183.331 |

ALREADY SANCTIONED VIDE MEMO NO. ZP-1524/AD(RA)/2023/2097 DATED:20-01-2023
 PROPOSED ARCHITECTURAL FEATURE