

Note :-

1. BUILDING WILL BE DESIGNED (STRUCTURES) AS PER RELEVANT IS CODES FOR EARTH QUAKE RESISTANCE.
2. THE BUILDING IS ARTIFICIALLY LIT AND MECHANICALLY VENTILATED.

TO BE READ WITH THIS OFFICE MEMO NO.: DATED :

PROJECT : THE ARBOUR

REVISED (2nd Revision) BUILDING PLANS OF GROUP HOUSING COLONY AREA MEASURING 25.087 ACRES (LICENCE NO. 123 OF 2012 DATED 20-12-2012 IN SECTOR-63, GURGAON BEING DEVELOPED BY ARLIE BUILDERS & DEVELOPERS PVT. LTD. AND OTHERS IN COLLABORATION WITH DLF HOME DEVELOPERS LTD.(EARLIER KNOWN AS DLF NEW GURGAON HOME DEVELOPERS PVT.LTD)

ARCHITECTURE: ARCOP

ARCOP ASSOCIATES PVT LTD
Plot No. 36B, Sector-32, Institutional Area, Gurugram, Haryana. 122001, India
Tel.: 91-124-4595500
91-124-4595550
Fax: 91-124-4595550

ASSOCIATE ARCHITECTS

RISIMIS ARCHITECTS

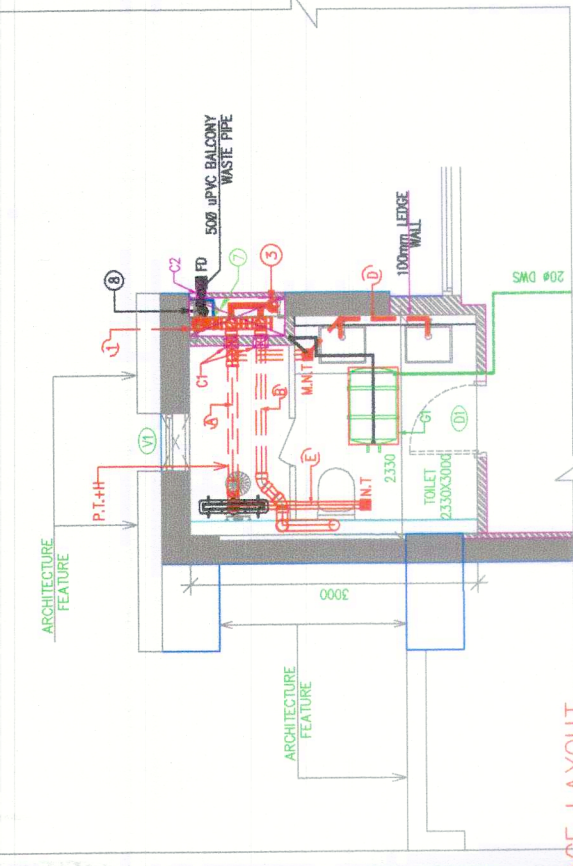
RSMS ARCHITECTS PVT. LTD.
69,Nora Niwas Bhawani Kunj (Behind D2), Vasant Kunj, New Delhi-110070.
Tel.: 011-26898616,26898617
www.rsms-arch.com

This is a "PROVISIONAL BUILDING PLAN" approved only for the purpose of inviting objections from the general public

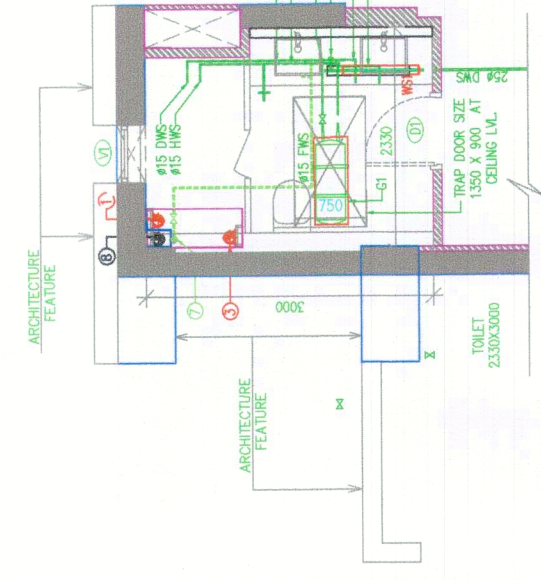
ATP (HQ) S.T.P (HQ) S.T.P (G) G.F.P (Hr.)
Member Member Member
B.P.A.C. B.P.A.C. B.P.A.C. B.P.A.C.
Chairman

DINESH KUMAR P.A(HQ) MEMBER BPAC
DDT (T) MEMBER BPAC
PA ATP

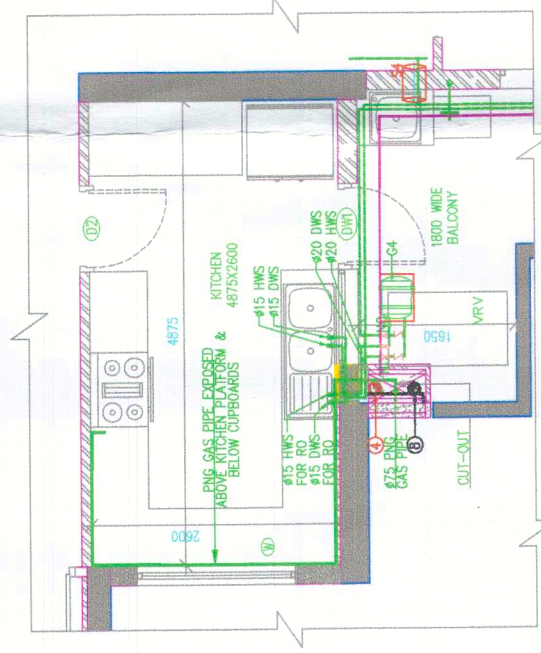
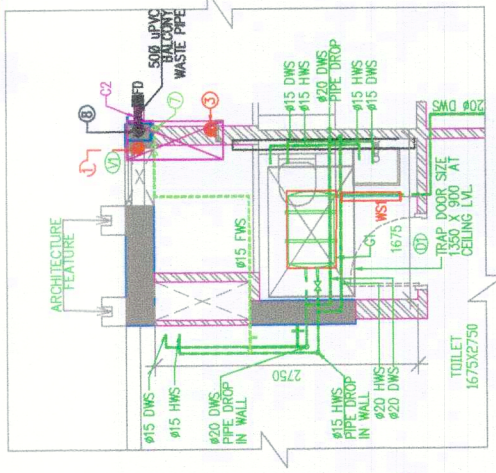
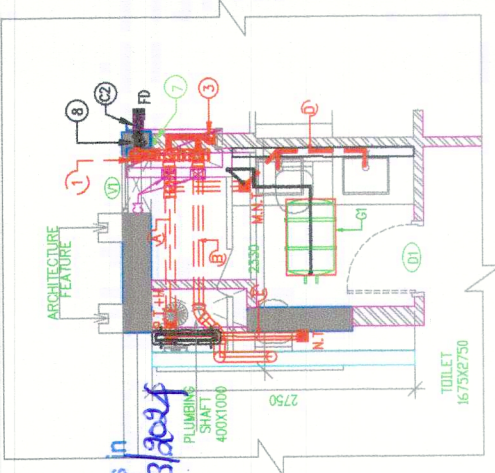
Drawing Title:- TYPICAL FLOOR TOILET DETAIL TOWER-A,B,C,D,E & EWS
Drawing No:- TD-01



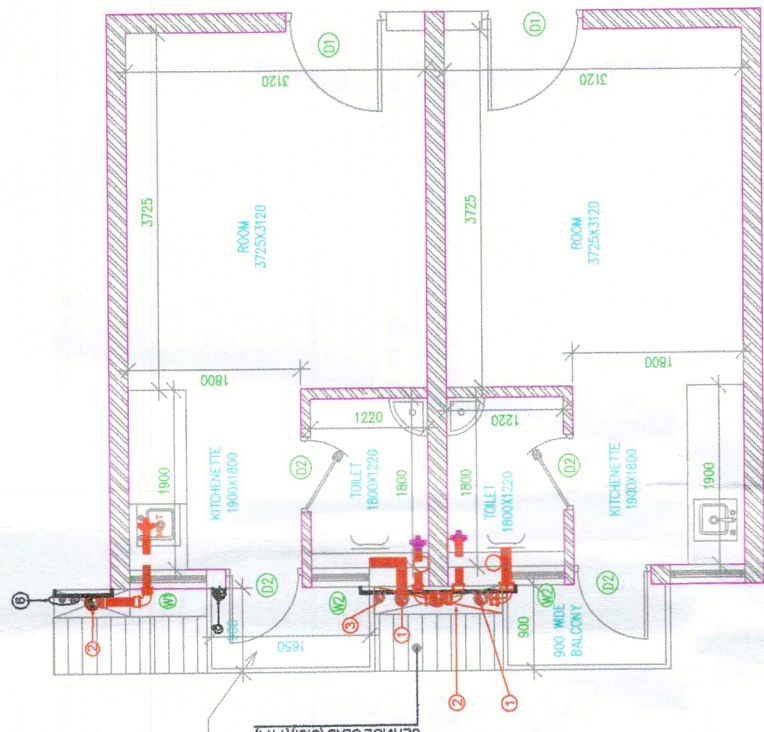
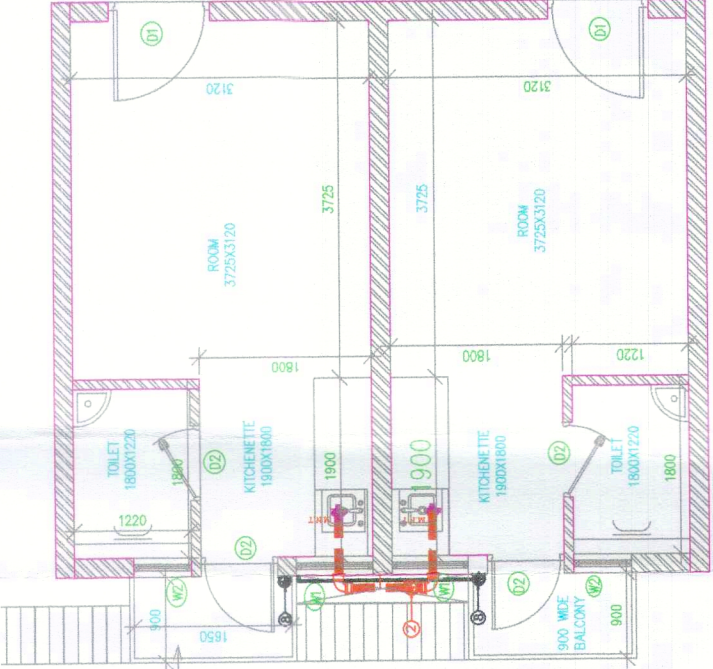
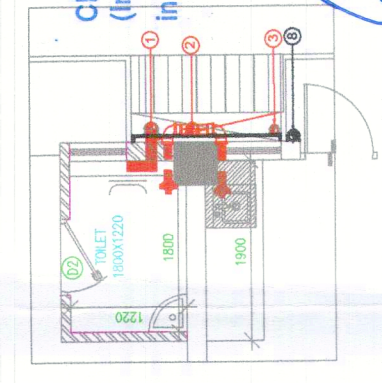
DRAINAGE LAYOUT TYPICAL TOILET DETAIL



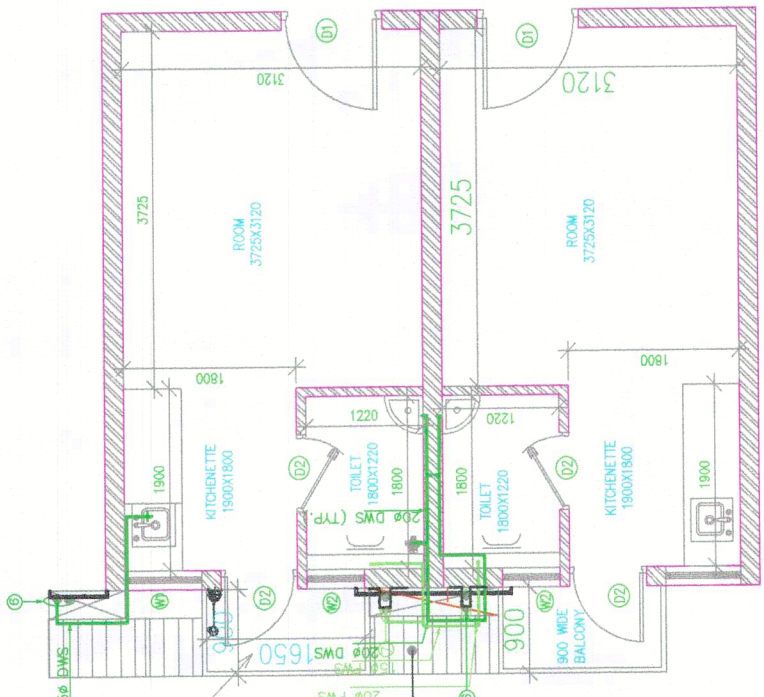
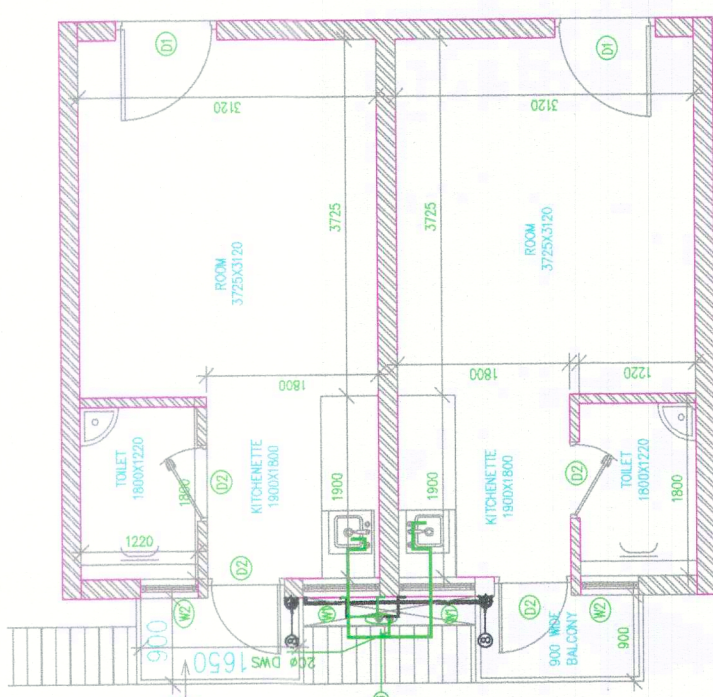
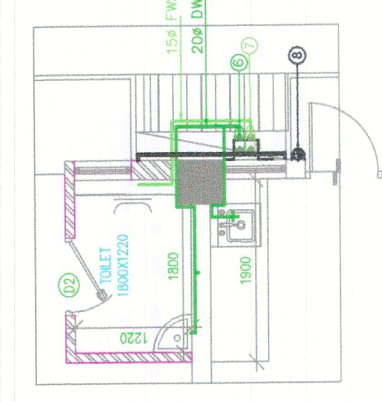
WATER SUPPLY LAYOUT TYPICAL TOILET DETAIL



Checked and approved for Public Health (Internal) Services only subject to comments in forwarding letter No. 28/AS dated 29.04.2024
Superintending Engineer (HQ) for Chief Engineer-I HSPV, Panchkula

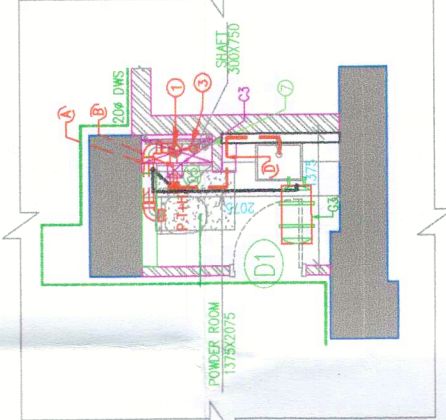
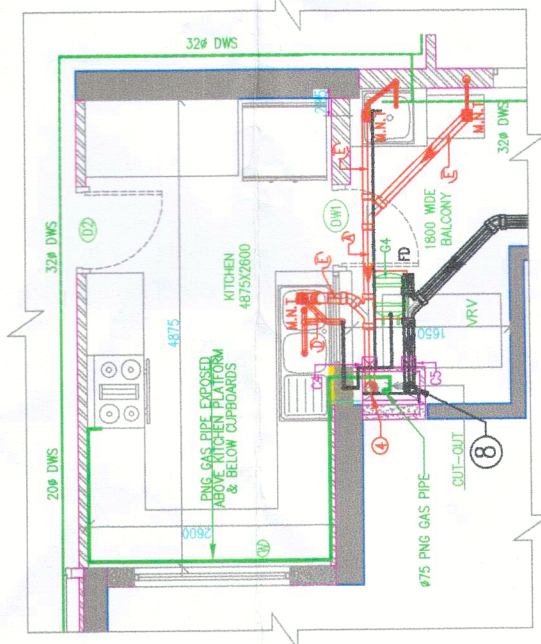


DRAINAGE LAYOUT TYPICAL EWS DETAIL



EWS TOILET DETAIL

WATER SUPPLY LAYOUT TYPICAL EWS DETAIL



ATP(HQ)
DATE: 29.04.2024